

## Product datasheet for **TP307398M**

### DCP1B (NM\_152640) Human Recombinant Protein

#### Product data:

Product Type:	Recombinant Proteins
Description:	Recombinant protein of human DCP1 decapping enzyme homolog B ( <i>S. cerevisiae</i> ) (DCP1B), 100 µg
Species:	Human
Expression Host:	HEK293T
Expression cDNA Clone or AA Sequence:	>RC207398 protein sequence Red=Cloning site Green=Tags(s)

MAAVAAGGLVGKGRDISLAALQRHDPYINRIVDVASQVALYTFGHRANEWEKTDVEGTLFVYTRSASPKH  
GFTIMNRLSMENRTEPITKDLDFQLQDPFLLYRNARLSIYGIWFYDKEECQRIAEMLMKNLTQYEQLKAHQ  
GTGAGISPVILNSGEGKEVDILRMLIKAKDEYTKCKTCEPKKITSSSAIYDNPNIKPIPVKPSENQQQ  
RIPQPNQTLDPEPQHLSLTALFGKQDKATCQETVEPPQTLHQQQQQQQQQQEKLPVIRQGVVRSLSYEEP  
RRHSPPIEKQLCPAIQKLMVRSADLHPLSELNRPCEGTHSAGEFFTGPVQPGSPHNIGTSRGVQNA  
SRTQNLFEKLQSTPGAANKCDPSTPAPASSAALNRSRAPTSTVTPVAPGKGLAQPPQAYFNGSLPPQTVGH  
QAHGREQSTLPRQTLAISGSQTGSSGVISPQELLKQLIVQQEQQLHASNRPALAAKFPVLAQSSGTGKP  
LESWINKTPNTEQQTPLFQVISPQRIPATAAPSLLMSPMVFAQPTSVPKRESGLLPVGGQEPAAATS  
LLLPIQSPEPSVITSSPLTKLQEQEALLYLIQNDNFLNIIYEAYLFSMTQAAMKTM

TRTRPLEQKLISEEDLAANDILDYKDDDDKV

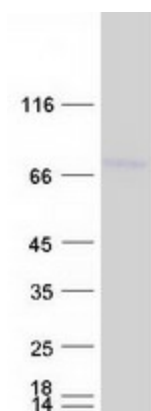
Tag:	C-Myc/DDK
Predicted MW:	67.5 kDa
Concentration:	>0.05 µg/µL as determined by microplate BCA method
Purity:	> 80% as determined by SDS-PAGE and Coomassie blue staining
Buffer:	25 mM Tris-HCl, 100 mM glycine, pH 7.3, 10% glycerol
Preparation:	Recombinant protein was captured through anti-DDK affinity column followed by conventional chromatography steps.
Note:	For testing in cell culture applications, please filter before use. Note that you may experience some loss of protein during the filtration process.
Storage:	Store at -80°C.



[View online »](#)

<b>Stability:</b>	Stable for 12 months from the date of receipt of the product under proper storage and handling conditions. Avoid repeated freeze-thaw cycles.
<b>RefSeq:</b>	<a href="#">NP_689853</a>
<b>Locus ID:</b>	196513
<b>UniProt ID:</b>	<a href="#">Q8IZD4</a>
<b>RefSeq Size:</b>	2105
<b>Cytogenetics:</b>	12p13.33
<b>RefSeq ORF:</b>	1854
<b>Synonyms:</b>	DCP1
<b>Summary:</b>	This gene encodes a member of a family of proteins that function in removing the 5' cap from mRNAs, which is a step in regulated mRNA decay. This protein localizes to cytoplasmic foci which are the site of mRNA breakdown and turnover. Alternative splicing results in multiple transcript variants. [provided by RefSeq, Feb 2016]
<b>Protein Pathways:</b>	RNA degradation

### Product images:



Coomassie blue staining of purified DCP1B protein (Cat# [TP307398]). The protein was produced from HEK293T cells transfected with DCP1B cDNA clone (Cat# [RC207398]) using MegaTran 2.0 (Cat# [TT210002]).