

## Product datasheet for **TP307397M**

### CPA5 (NM\_080385) Human Recombinant Protein

#### Product data:

Product Type:	Recombinant Proteins
Description:	Recombinant protein of human carboxypeptidase A5 (CPA5), transcript variant 1, 100 µg
Species:	Human
Expression Host:	HEK293T
Expression cDNA Clone or AA Sequence:	>RC207397 protein sequence <b>Red</b> =Cloning site <b>Green</b> =Tags(s)
	<p>MQGTPGGGTRPGPSPVDRRTLLVFSFILAAALGQMNFTGDQVLRVLAKDEKQLSLLGDLEGLKPQKVDFW RGPARPSLPVDMRVPFSELKDIKAYLESHGLAYSIMIKDIQVLLDEERQAMAKSRRLERSTNSFSYSSYH TLEEIYSWIDNFMVMEHSDIVSKIQIGNSFENQSILVLKFSTGGSRHPAIWIDTGIHSREWTHATGIWTA NKIVSDYGKDRVLTDLNAMDFIELVTNPDGFAFTHSMNRLWRKNKSIRPGIFCIGVDLNRNWKSGFGG NGSNSNPCSETYHGSPQSEPEVAIVNFITAHGNFKALISIHYSQMLMYPYGRSLDPVSNQRELYDLA KDAVEALYKVHGIEYIFGSISTTLYVASGITVDWAYDSGIKYAFSELRDTGQYGFLLPATQIIPTAQET WMALRTIMEHTLNHPY</p> <p><b>TRTRPLEQKLISEEDLAANDILDYKDDDDKV</b></p>
Tag:	C-Myc/DDK
Predicted MW:	48.9 kDa
Concentration:	>0.05 µg/µL as determined by microplate BCA method
Purity:	> 80% as determined by SDS-PAGE and Coomassie blue staining
Buffer:	25 mM Tris-HCl, 100 mM glycine, pH 7.3, 10% glycerol
Preparation:	Recombinant protein was captured through anti-DDK affinity column followed by conventional chromatography steps.
Note:	For testing in cell culture applications, please filter before use. Note that you may experience some loss of protein during the filtration process.
Storage:	Store at -80°C.
Stability:	Stable for 12 months from the date of receipt of the product under proper storage and handling conditions. Avoid repeated freeze-thaw cycles.
RefSeq:	<u><a href="#">NP_525124</a></u>



[View online »](#)

Locus ID: 93979

UniProt ID: [Q8WXQ8](#), [A4D1M2](#)

RefSeq Size: 2078

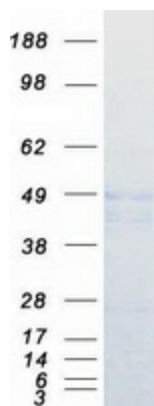
Cytogenetics: 7q32.2

RefSeq ORF: 1308

**Summary:** Carboxypeptidases have functions ranging from digestion of food to selective biosynthesis of neuroendocrine peptides. Members of the A/B subfamily of carboxypeptidases, such as CPA5, contain an approximately 90-amino acid pro region that assists in the folding of the active carboxypeptidase domain. Cleavage of the pro region activates the enzyme (Wei et al., 2002 [PubMed 11836249]).[supplied by OMIM, Mar 2008]

**Protein Families:** Druggable Genome, Secreted Protein

### Product images:



Coomassie blue staining of purified CPA5 protein (Cat# [TP307397]). The protein was produced from HEK293T cells transfected with CPA5 cDNA clone (Cat# [RC207397]) using MegaTran 2.0 (Cat# [TT210002]).