

Product datasheet for **TP307397L**

CPA5 (NM_080385) Human Recombinant Protein

Product data:

Product Type: Recombinant Proteins

Description: Recombinant protein of human carboxypeptidase A5 (CPA5), transcript variant 1, 1 mg

Species: Human

Expression Host: HEK293T

Expression cDNA Clone or AA Sequence: >RC207397 protein sequence
Red=Cloning site Green=Tags(s)

MQGTPGGGTRPGPSPVDRRTLLVFSFILAAALGQMNFTGDQVLRVLAKDEKQLSLLGDLEGLKPQKVDFW
RGPAPSLPVDMRVPFSELKDIKAYLESHGLAYSIMIKDIQVLLDEERQAMAKSRRLERSTNSFSYSSYH
TLEEISWIDNFMHSDIVSKIQIGNSFENQSILVLKFSTGGSRHPAIWIDTGIHSREWTHATGIWTA
NKIVSDYGKDRVLTDLNAMDFIELVTNPDGFAFTHSMNRLWRKNKSIRPGIFCIGVDLNRNWKSGFGG
NGSNSNPCSEYHGPSPQSEPEVAIVNFITAHGNFKALISIHYSQMLMYPYGRSLDPVSNQRELYDLA
KDAVEALYKVHGIEYIFGSISTTLYVASGITVDWAYDSGIKYAFSELRDTGQYGFLLPATQIIPTAQET
WMALRTIMEHTLNHPY

TRTRPLEQKLISEEDLAANDILDYKDDDDKV

Tag: C-Myc/DDK

Predicted MW: 48.9 kDa

Concentration: >0.05 µg/µL as determined by microplate BCA method

Purity: > 80% as determined by SDS-PAGE and Coomassie blue staining

Buffer: 25 mM Tris-HCl, 100 mM glycine, pH 7.3, 10% glycerol

Preparation: Recombinant protein was captured through anti-DDK affinity column followed by conventional chromatography steps.

Note: For testing in cell culture applications, please filter before use. Note that you may experience some loss of protein during the filtration process.

Storage: Store at -80°C.

Stability: Stable for 12 months from the date of receipt of the product under proper storage and handling conditions. Avoid repeated freeze-thaw cycles.

RefSeq: [NP_525124](#)



[View online »](#)

Locus ID: 93979

UniProt ID: [Q8WXQ8](#), [A4D1M2](#)

RefSeq Size: 2078

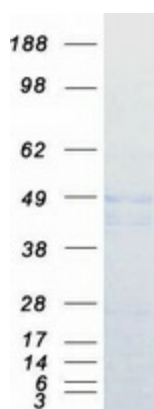
Cytogenetics: 7q32.2

RefSeq ORF: 1308

Summary: Carboxypeptidases have functions ranging from digestion of food to selective biosynthesis of neuroendocrine peptides. Members of the A/B subfamily of carboxypeptidases, such as CPA5, contain an approximately 90-amino acid pro region that assists in the folding of the active carboxypeptidase domain. Cleavage of the pro region activates the enzyme (Wei et al., 2002 [PubMed 11836249]).[supplied by OMIM, Mar 2008]

Protein Families: Druggable Genome, Secreted Protein

Product images:



Coomassie blue staining of purified CPA5 protein (Cat# [TP307397]). The protein was produced from HEK293T cells transfected with CPA5 cDNA clone (Cat# [RC207397]) using MegaTran 2.0 (Cat# [TT210002]).