

Product datasheet for **TP307395M**

Gamma tubulin complex component 3 (TUBGCP3) (NM_006322) Human Recombinant Protein

Product data:

| | |
|---------------------------------------|--|
| Product Type: | Recombinant Proteins |
| Description: | Recombinant protein of human tubulin, gamma complex associated protein 3 (TUBGCP3), 100 µg |
| Species: | Human |
| Expression Host: | HEK293T |
| Expression cDNA Clone or AA Sequence: | >RC207395 protein sequence Red =Cloning site Green =Tags(s) |

MATPDQKSPNVLLQNLCCRILGRSEADVAQQFQYAVRVIGSNFAPTVERDEFLVAEKIKKELIRQRREAD
AALFSELHRKLHSQGLKNKWSILYLLLSLSEDP RRQPSKVSSYATLFAQALPRDAHSTPYYPARPQTLP
LSYQDRSAQSAQSSGSVGS SGISSIGLCALSGPAPAPQ SLLPGQSNQAPGVGDCLRQQLGSRLAWTLTAN
QPSSQATTSKGVPSAVSRNMTRSRRREGDTGGTMEITEAALVRDILYVFQGDGKNIKMNNNTENCYKVEGK
ANLSRSLRDTAVRSELGWLHNKIRRYTDQRS LDRSFGLVGVQSFCAALHQELREYYRLLSVLHSQLQLED
DQGVNLGLESSLTRRLLVWYDPKIRLKTAAALVDHCQGRKGGELASAVHAYTKTGDPYMRSLVQHILS
LVSHPVLSFLYRWIYDGELEDYHEFFVASDPTVKTDRLWHDKYTLRKS MIPSFMTMDQSRKVLLIGKSI
NFLHQVCHDQTP TTKMIAVTKSAESPQDAADLFTDLENAFQ GKIDAAYFETSKYLLDVLNKKYSLLDHMQ
AMRRYLLLGQGD FIFRHLMDLLKPELVRPATTLYQHNL TGILETAVRATNAQFDSPEILRRLDVRLLEVSP
GDTGWDVFSLDYHVDGPIATVFTRECM SHYLRVFNFLWRAKRMEYILTDIRKGHMCAKLLRNMP EFSGV
LHQCHILASEMVHFIHQMQYYITFEVLECSWDELW NKVQQAQDLDHIIAAHEVFLDTIISRCLLDSDSRA
LLNQLRAVFDQIIE LQNAQDAIYRAALEELQRR LQFEEKKQREIEGQWGVTAEEEEENKRIGEFKESI
PKMCSQLRILTHFYQGIVQQFLVLLTSSDES LRFSLFR LDFNEHYKAREPRLRVSLGTRGRRSSHT

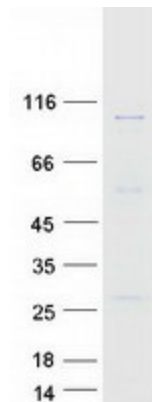
TRTRPLEQKLISEEDLAANDILDYKDDDDKV

| | |
|----------------|---|
| Tag: | C-Myc/DDK |
| Predicted MW: | 103.4 kDa |
| Concentration: | >0.05 µg/µL as determined by microplate BCA method |
| Purity: | > 80% as determined by SDS-PAGE and Coomassie blue staining |
| Buffer: | 25 mM Tris-HCl, 100 mM glycine, pH 7.3, 10% glycerol |



[View online »](#)

| | |
|--------------------------|--|
| Preparation: | Recombinant protein was captured through anti-DDK affinity column followed by conventional chromatography steps. |
| Note: | For testing in cell culture applications, please filter before use. Note that you may experience some loss of protein during the filtration process. |
| Storage: | Store at -80°C. |
| Stability: | Stable for 12 months from the date of receipt of the product under proper storage and handling conditions. Avoid repeated freeze-thaw cycles. |
| RefSeq: | NP_006313 |
| Locus ID: | 10426 |
| UniProt ID: | Q96CW5 |
| RefSeq Size: | 3928 |
| Cytogenetics: | 13q34 |
| RefSeq ORF: | 2721 |
| Synonyms: | 104p; ALP6; GCP3; Grip104; SPBC98; Spc98; Spc98p |
| Summary: | Gamma-tubulin complex is necessary for microtubule nucleation at the centrosome. [UniProtKB/Swiss-Prot Function] |
| Protein Families: | Druggable Genome |

Product images:

Coomassie blue staining of purified TUBGCP3 protein (Cat# [TP307395]). The protein was produced from HEK293T cells transfected with TUBGCP3 cDNA clone (Cat# [RC207395]) using MegaTran 2.0 (Cat# [TT210002]).