

## Product datasheet for **TP307382L**

### **FAM229B (NM\_001033564) Human Recombinant Protein**

#### Product data:

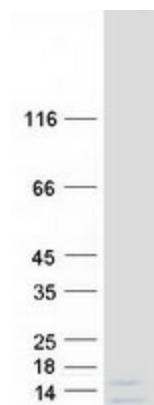
Product Type:	Recombinant Proteins
Description:	Recombinant protein of human chromosome 6 open reading frame 225 (C6orf225), 1 mg
Species:	Human
Expression Host:	HEK293T
Expression cDNA Clone or AA Sequence:	>RC207382 protein sequence <b>Red</b> =Cloning site <b>Green</b> =Tags(s)  MPFQFGTQPRRFPVEGGDSSIELEPGLSSSAACNGKEMSPTRQLRRCPGSHCLTITDVPVTVYATTRKPP AQSSKEMHPK  <b>TRTRPLEQKLISEEDLAANDILDYKDDDDKV</b>
Tag:	C-Myc/DDK
Predicted MW:	8.5 kDa
Concentration:	>0.05 µg/µL as determined by microplate BCA method
Purity:	> 80% as determined by SDS-PAGE and Coomassie blue staining
Buffer:	25 mM Tris-HCl, 100 mM glycine, pH 7.3, 10% glycerol
Preparation:	Recombinant protein was captured through anti-DDK affinity column followed by conventional chromatography steps.
Note:	For testing in cell culture applications, please filter before use. Note that you may experience some loss of protein during the filtration process.
Storage:	Store at -80°C.
Stability:	Stable for 12 months from the date of receipt of the product under proper storage and handling conditions. Avoid repeated freeze-thaw cycles.
RefSeq:	<a href="#">NP_001028736</a>
Locus ID:	619208
UniProt ID:	<a href="#">Q4G0N7</a>
RefSeq Size:	2682
Cytogenetics:	6q21


[View online »](#)

RefSeq ORF: 240

Synonyms: C6orf225

### Product images:



Coomassie blue staining of purified FAM229B protein (Cat# [TP307382]). The protein was produced from HEK293T cells transfected with FAM229B cDNA clone (Cat# [RC207382]) using MegaTran 2.0 (Cat# [TT210002]).