

## Product datasheet for **TP307354M**

### **PABP (PABPC1) (NM\_002568) Human Recombinant Protein**

#### **Product data:**

**Product Type:** Recombinant Proteins

**Description:** Recombinant protein of human poly(A) binding protein, cytoplasmic 1 (PABPC1), 100 µg

**Species:** Human

**Expression Host:** HEK293T

**Expression cDNA Clone or AA Sequence:** >RC207354 representing NM\_002568

**Red**=Cloning site **Green**=Tags(s)

MNPSAPSYPMASLYVGDLPDVTEAMLYEKFSPAGPILSIRVCRDMITRRSLGYAYVNFQQPADAERALD  
TMNFDVIKGPVVRIMWSQRDPSLRKSGVGNIFIKNLDKSIDNKALYDTFSAFGNILSCKWVCDENGSKGY  
GFVHFETQEAERAIEKMNGMLLNDRKVFVGRFKSRKEREAEELGARAKEFTNVYIKNFGEDMDDERLKD  
FGKFGPALSVMKMTDESCKSGFGFVSFERHEDAQKAVDEMNGKELNGKQIYVGRAQKKVERQTELKRKF  
EQMKQDRITRYQGVNLYVKNLDDGIDDERLRKEFSPFGTITSAKVMMEGGRSKGFGFVCFSSPEEATKAV  
TEMNGRIVATKPLYVALAQRKEERQAHLTNQYMQRMASVRAVNPVINPYQPAPPSGYFMAAIPQTQNR  
AYPPSQIAQLRPSRWTAQGARPHPFQNMPGAIRPAAPRPPFSTMRPASSQVPRVMSTQRVANTSTQTM  
GPRPAAAAAATPAVRTVPQYKYAAGVRNPQQHLNAQPQVTMQQPAVHVQGQEPLTASMLASAPPQEQKQ  
MLGERLFLPIQAMHPTLAGKITGMILLEIDNSELLHMLESPESLRKVD EAVAVLQAHQAKEAAQKAVNSA  
TGVPTV

**SGPTRRRLEQKLISEEDLAANDILDYKDDDDKV**

**Tag:** C-Myc/DDK

**Predicted MW:** 70.5 kDa

**Concentration:** >0.05 µg/µL as determined by microplate BCA method

**Purity:** > 80% as determined by SDS-PAGE and Coomassie blue staining

**Buffer:** 25 mM Tris-HCl, 100 mM glycine, pH 7.3, 10% glycerol

**Preparation:** Recombinant protein was captured through anti-DDK affinity column followed by conventional chromatography steps.

**Note:** For testing in cell culture applications, please filter before use. Note that you may experience some loss of protein during the filtration process.

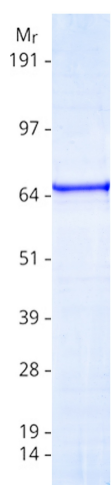
**Storage:** Store at -80°C.



[View online »](#)

<b>Stability:</b>	Stable for 12 months from the date of receipt of the product under proper storage and handling conditions. Avoid repeated freeze-thaw cycles.
<b>RefSeq:</b>	<u>NP_002559</u>
<b>Locus ID:</b>	26986
<b>UniProt ID:</b>	<u>P11940, A0A024R9C1</u>
<b>RefSeq Size:</b>	2869
<b>Cytogenetics:</b>	8q22.3
<b>RefSeq ORF:</b>	1908
<b>Synonyms:</b>	PAB1; PABP; PABP1; PABPC2; PABPL1
<b>Summary:</b>	This gene encodes a poly(A) binding protein. The protein shuttles between the nucleus and cytoplasm and binds to the 3' poly(A) tail of eukaryotic messenger RNAs via RNA-recognition motifs. The binding of this protein to poly(A) promotes ribosome recruitment and translation initiation; it is also required for poly(A) shortening which is the first step in mRNA decay. The gene is part of a small gene family including three protein-coding genes and several pseudogenes. [provided by RefSeq, Aug 2010]

### Product images:



Coomassie blue staining of purified PABPC1 protein (Cat# [TP307354]). The protein was produced from HEK293T cells transfected with PABPC1 cDNA clone (Cat# [RC207354]) using MegaTran 2.0 (Cat# [TT210002]).