

Product datasheet for **TP307333M**

EIF4E (NM_001968) Human Recombinant Protein

Product data:

Product Type:	Recombinant Proteins
Description:	Recombinant protein of human eukaryotic translation initiation factor 4E (EIF4E), transcript variant 1, 100 µg
Species:	Human
Expression Host:	HEK293T
Expression cDNA Clone or AA Sequence:	>RC207333 protein sequence Red =Cloning site Green =Tags(s)

MATVEPETTPTPNPPTTEEEKTESNQEVANPEHYIKHPLQNRWALWFFKNDKSKTWQANLRLISKFDTVE
DFWALYNHIQLSSNLMPGCDYSLFKDGIEMWEDEKNKRGGRWLITLNKQQRSDLDRFWLETLLCLIGE
SFDDYSDDVCGAVNVRAKGDKIAIWTTECENREAVTHIGRVYKERLGLPPKIVIGYQSHADTATKSGST
TKNRFVV

TRTRPLEQKLISEEDLAANDILDYKDDDDKV

Tag:	C-Myc/DDK
Predicted MW:	24.9 kDa
Concentration:	>0.05 µg/µL as determined by microplate BCA method
Purity:	> 80% as determined by SDS-PAGE and Coomassie blue staining
Buffer:	25 mM Tris-HCl, 100 mM glycine, pH 7.3, 10% glycerol
Preparation:	Recombinant protein was captured through anti-DDK affinity column followed by conventional chromatography steps.
Note:	For testing in cell culture applications, please filter before use. Note that you may experience some loss of protein during the filtration process.
Storage:	Store at -80°C.
Stability:	Stable for 12 months from the date of receipt of the product under proper storage and handling conditions. Avoid repeated freeze-thaw cycles.
RefSeq:	<u>NP_001959</u>
Locus ID:	1977



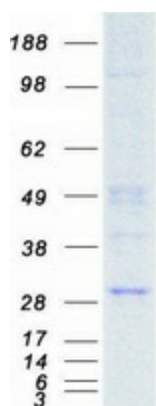
[View online »](#)

UniProt ID: [P06730](#)
RefSeq Size: 4749
Cytogenetics: 4q23
RefSeq ORF: 651
Synonyms: AUTS19; CBP; eIF-4E; EIF4E1; EIF4EL1; EIF4F

Summary: The protein encoded by this gene is a component of the eukaryotic translation initiation factor 4F complex, which recognizes the 7-methylguanosine cap structure at the 5' end of messenger RNAs. The encoded protein aids in translation initiation by recruiting ribosomes to the 5'-cap structure. Association of this protein with the 4F complex is the rate-limiting step in translation initiation. This gene acts as a proto-oncogene, and its expression and activation is associated with transformation and tumorigenesis. Several pseudogenes of this gene are found on other chromosomes. Alternative splicing results in multiple transcript variants. [provided by RefSeq, Sep 2015]

Protein Pathways: Insulin signaling pathway, mTOR signaling pathway

Product images:



Coomassie blue staining of purified EIF4E protein (Cat# [TP307333]). The protein was produced from HEK293T cells transfected with EIF4E cDNA clone (Cat# [RC207333]) using MegaTran 2.0 (Cat# [TT210002]).