

## Product datasheet for TP307316L

### MA2 (PNMA2) (NM\_007257) Human Recombinant Protein

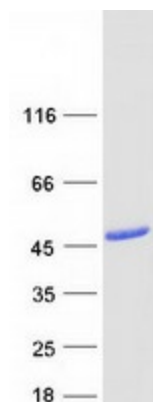
#### Product data:

Product Type:	Recombinant Proteins
Description:	Recombinant protein of human paraneoplastic antigen MA2 (PNMA2), 1 mg
Species:	Human
Expression Host:	HEK293T
Expression cDNA Clone or AA Sequence:	>RC207316 representing NM_007257 <span style="color: red;">Red</span> =Cloning site <span style="color: green;">Green</span> =Tags(s)  MALALLEDWCRIMSVDEQKSLMVTGIPADFEEAEIQEVLQETLKSLGRYRLLGKIFRKQENANAVLLELL EDTDVSAIPSEVQGGKGGVWKVIFKTPNQDTEFLERLNLFLKEGQTVSGMFRALGQEGVSPATVPCISPE LLAHLLGQAMAHAPQPLPMRYRKLRVFGSAVPAPEEESFEVWLEQATEIVKEWPVTEAEKKRWLAESL RGPALDLMHIVQADNPSISVEECLEAFKQVFGSLESRRTAQVRYLKTYQEEGEKVSAYVLRLETLLRRAV EKRAIPRRIADQVSLEQVMAGATLNQMLWCRLRELKDQGPPPSFLELMKVIREEEEEEEASFENESIEEPE ERDGYGRWNHEGDD  <span style="color: red;">TR</span> <span style="color: green;">TRPLEQKLISEEDLAANDILDYKDDDDKV</span>
Tag:	C-Myc/DDK
Predicted MW:	41.3 kDa
Concentration:	>0.05 µg/µL as determined by microplate BCA method
Purity:	> 80% as determined by SDS-PAGE and Coomassie blue staining
Buffer:	25 mM Tris-HCl, 100 mM glycine, pH 7.3, 10% glycerol
Preparation:	Recombinant protein was captured through anti-DDK affinity column followed by conventional chromatography steps.
Note:	For testing in cell culture applications, please filter before use. Note that you may experience some loss of protein during the filtration process.
Storage:	Store at -80°C.
Stability:	Stable for 12 months from the date of receipt of the product under proper storage and handling conditions. Avoid repeated freeze-thaw cycles.
RefSeq:	<u><a href="#">NP_009188</a></u>
Locus ID:	10687


[View online »](#)

UniProt ID: [Q9UL42](#)  
 RefSeq Size: 4788  
 Cytogenetics: 8p21.2  
 RefSeq ORF: 1092  
 Synonyms: MA2; MM2; RGAG2

### Product images:



Coomassie blue staining of purified PNMA2 protein (Cat# [TP307316]). The protein was produced from HEK293T cells transfected with PNMA2 cDNA clone (Cat# [RC207316]) using MegaTran 2.0 (Cat# [TT210002]).