

## Product datasheet for **TP307304L**

### **HBLD1 (ISCA2) (NM\_194279) Human Recombinant Protein**

#### **Product data:**

Product Type:	Recombinant Proteins
Description:	Recombinant protein of human iron-sulfur cluster assembly 2 homolog ( <i>S. cerevisiae</i> ) (ISCA2), 1 mg
Species:	Human
Expression Host:	HEK293T
Expression cDNA Clone or AA Sequence:	>RC207304 protein sequence <b>Red</b> =Cloning site <b>Green</b> =Tags(s)
	 MAAAWGSSSLTAATQRAVTPWPRGRLLTASLGPQARREASSSSPEAGEGQICLTDSCVQRLLLEITEGSEFL RLQVEGGGCSGFQYKFSLDTVINPDDRVFEQGGARVVVDSDSLAFVKGAQVDFSQELIRSSFQVLNPNQA QQGCSCGSSFSIKL  <b>TRTRPLEQKLISEEDLAANDILDYKDDDDKV</b>
Tag:	C-Myc/DDK
Predicted MW:	16.3 kDa
Concentration:	>0.05 µg/µL as determined by microplate BCA method
Purity:	> 80% as determined by SDS-PAGE and Coomassie blue staining
Buffer:	25 mM Tris-HCl, 100 mM glycine, pH 7.3, 10% glycerol
Preparation:	Recombinant protein was captured through anti-DDK affinity column followed by conventional chromatography steps.
Note:	For testing in cell culture applications, please filter before use. Note that you may experience some loss of protein during the filtration process.
Storage:	Store at -80°C.
Stability:	Stable for 12 months from the date of receipt of the product under proper storage and handling conditions. Avoid repeated freeze-thaw cycles.
RefSeq:	<a href="#">NP_919255</a>
Locus ID:	122961
UniProt ID:	<a href="#">Q86U28</a>



[View online »](#)

RefSeq Size: 1088

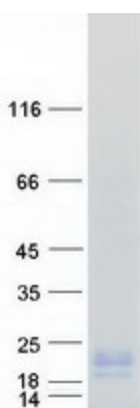
Cytogenetics: 14q24.3

RefSeq ORF: 462

Synonyms: c14\_5557; HBLD1; ISA2; MMDS4

**Summary:** The protein encoded by this gene is an A-type iron-sulfur cluster (ISC) protein found in mitochondria. The encoded protein appears to be involved in the maturation of mitochondrial iron-sulfur proteins. Two transcript variants encoding different isoforms have been found for this gene. [provided by RefSeq, Dec 2012]

### Product images:



Coomassie blue staining of purified ISCA2 protein (Cat# [TP307304]). The protein was produced from HEK293T cells transfected with ISCA2 cDNA clone (Cat# [RC207304]) using MegaTran 2.0 (Cat# [TT210002]).