

Product datasheet for TP307303L

PLCL2 (NM_015184) Human Recombinant Protein

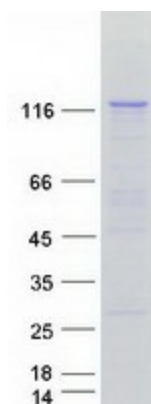
Product data:

Product Type:	Recombinant Proteins
Description:	Recombinant protein of human phospholipase C-like 2 (PLCL2), transcript variant 2, 1 mg
Species:	Human
Expression Host:	HEK293T
Expression cDNA Clone or AA Sequence:	>RC207303 protein sequence Red =Cloning site Green =Tags(s)
	<p>MPTEKKISSASDCINSMVEGSELKKVRSNSRIYHRYFLLDADMQSLRWEPSSKKDSEKAKIDIKSIKEVRT GKNTDIFRSNGISDRISEDCAFSVIYGENYESLDLVANSADVANIWVTGLRYLISYGKHTLDMLESSQDN MRTSWWSQMFSEIDVDNLGHITLCNAVQCIRNLNPLGLKTSKIELKFKELHKSCKDAGTEVTKEEFIEVFH ELCTRPEIYFLLVQFSSNKEFLDTKDLMMFLEAEQGVAHINEEISLEIIHKYEPSKEGQEKGWLSIDGFT NYLMSPDCYIFDPEHKKVCQDMKQPLSHYFINSSHNTYLIEDQFRGPSDITGYIRALKMGCRSVELDVWD GPDNEPVIYTGHTMTSQIVFRSVIDIINKYAFFASEYPLILCLENHCSIKQKQKVMVQHMKLLGDKLYTT SPNVEESYLPSPDVLKGGKILIKAKKSSNCSGVEGDVTDDEDEGAEMSQRMGKENMEQPNNVPVKRFQLCK ELSELSICKSVQFKEFQMSFQVQKYWEVCSFNEVLASKYANENPGDFVNYNKRFLARVFPSPMRIDSSN MNPQDFWKCGCQIVAMNFQTPGLMMDLNLIGWFRQNGNCGYVLRPAIMREEVSFFSVNTKDSVPGVSPQLL HIKIISGQNFPPKPGSGAKGDVDPYVYVEIHGIPADCAEQRTKTVHQNGDAHIFDESFEFQINLPELAM VRFVVLDDDYIGDEFIQYTIPFECLQTGYRHVPLQSLTGEVLAHASLFVHVVAITNRRGGGKPRKRGLSV RKGKKSREYASLRTLWIKTVDEVFKNAQPPIRDATDLRENMQNAVVSFKELCGLSSVANLMQCMLAVSPR FLGPDNTPLVVLNLSEQYPTMELQGIVPEVLKKIVTTYDMMIQLKALIENADAVYEKIVHCQKAAMEFH EHLHSIGTKEGLKERKLQKAVESFTWNITILKGQADLLKYAKNETLENLKQIHFAAVSCGLNKPGETENAD VQKPRRSLEVIPEKANDETGE</p> <p>TRTRPLEQKLISEEDLAANDILDYKDDDDKV</p>
Tag:	C-Myc/DDK
Predicted MW:	113.4 kDa
Concentration:	>0.05 µg/µL as determined by microplate BCA method
Purity:	> 80% as determined by SDS-PAGE and Coomassie blue staining
Buffer:	25 mM Tris-HCl, 100 mM glycine, pH 7.3, 10% glycerol



[View online »](#)

Preparation:	Recombinant protein was captured through anti-DDK affinity column followed by conventional chromatography steps.
Note:	For testing in cell culture applications, please filter before use. Note that you may experience some loss of protein during the filtration process.
Storage:	Store at -80°C.
Stability:	Stable for 12 months from the date of receipt of the product under proper storage and handling conditions. Avoid repeated freeze-thaw cycles.
RefSeq:	<u>NP_055999</u>
Locus ID:	23228
UniProt ID:	<u>Q9UPR0</u>
RefSeq Size:	3964
Cytogenetics:	3p24.3
RefSeq ORF:	3003
Synonyms:	PLCE2
Summary:	May play a role in the regulation of Ins(1,4,5)P3 around the endoplasmic reticulum. [UniProtKB/Swiss-Prot Function]
Protein Families:	Druggable Genome

Product images:

Coomassie blue staining of purified PLCL2 protein (Cat# [TP307303]). The protein was produced from HEK293T cells transfected with PLCL2 cDNA clone (Cat# [RC207303]) using MegaTran 2.0 (Cat# [TT210002]).