

Product datasheet for **TP307282M**

SOHLH1 (NM_001012415) Human Recombinant Protein

Product data:

Product Type: Recombinant Proteins
Description: Recombinant protein of human spermatogenesis and oogenesis specific basic helix-loop-helix 1 (SOHLH1), transcript variant 2, 100 µg

Species: Human

Expression Host: HEK293T

Expression cDNA Clone or AA Sequence: >RC207282 protein sequence
Red=Cloning site **Green**=Tags(s)

MASRCSEPYPEVSRIPTVRGCNGSLSGALSCCEDSAQGSPPKAPTVAEGPSSCLRRNVISERERRKRMS
LSCERLRALLPQFDGRREDMASVLEMSVQFLRLASALGPSQEQHAILASSKEMWHSLQEDVLQLTLSSQI
QAGVPDPGTGASSGTRTPDVKAFLESPWLDPASASPEPVPFILASSRQWDPASCTSLGTDKCEALLGLC
QVRGGLPPFSEPSLVPWPPGRSLPKAVRPPLSWPPFSQQQTLPVMSGEALGWLGQAGSLAMGAAPLGEF
AKEDPMLAQEAGSALGSDVDDGTSFLLTAGPSSWPGEWGPGFRAGPPA

TRTRPLEQKLISEEDLAANDILDYKDDDDKV

Tag: C-Myc/DDK

Predicted MW: 34.3 kDa

Concentration: >0.05 µg/µL as determined by microplate BCA method

Purity: > 80% as determined by SDS-PAGE and Coomassie blue staining

Buffer: 25 mM Tris-HCl, 100 mM glycine, pH 7.3, 10% glycerol

Preparation: Recombinant protein was captured through anti-DDK affinity column followed by conventional chromatography steps.

Note: For testing in cell culture applications, please filter before use. Note that you may experience some loss of protein during the filtration process.

Storage: Store at -80°C.

Stability: Stable for 12 months from the date of receipt of the product under proper storage and handling conditions. Avoid repeated freeze-thaw cycles.

RefSeq: [NP_001012415](#)

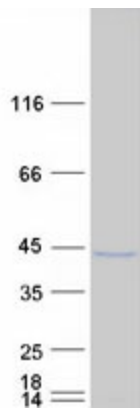
Locus ID: 402381



[View online »](#)

UniProt ID:	Q5JUK2
RefSeq Size:	1997
Cytogenetics:	9q34.3
RefSeq ORF:	984
Synonyms:	bA100C15.3; bHLHe80; C9orf157; NOHLH; ODG5; SPATA27; SPGF32; TEB2
Summary:	This gene encodes one of testis-specific transcription factors which are essential for spermatogenesis, oogenesis and folliculogenesis. This gene is located on chromosome 9. Mutations in this gene are associated with nonobstructive azoospermia. Alternatively spliced transcript variants encoding different isoforms have been found for this gene. [provided by RefSeq, Aug 2013]

Product images:



Coomassie blue staining of purified SOHLH1 protein (Cat# [TP307282]). The protein was produced from HEK293T cells transfected with SOHLH1 cDNA clone (Cat# [RC207282]) using MegaTran 2.0 (Cat# [TT210002]).