

## Product datasheet for **TP307282L**

### SOHLH1 (NM\_001012415) Human Recombinant Protein

#### Product data:

Product Type:	Recombinant Proteins
Description:	Recombinant protein of human spermatogenesis and oogenesis specific basic helix-loop-helix 1 (SOHLH1), transcript variant 2, 1 mg
Species:	Human
Expression Host:	HEK293T
Expression cDNA Clone or AA Sequence:	>RC207282 protein sequence <b>Red</b> =Cloning site <b>Green</b> =Tags(s)

MASRCSEPYPEVSRIPTVRGCNGSLSGALSCCEDSAQGSPPKAPTVAEGPSSCLRRNVISERERRKRMS  
LSCERLRALLPQFDGRREDMASVLEMSVQFLRLASALGPSQEQHAILASSKEMWHS LQEDVLQLTLSSQI  
QAGVPDPGTGASSGTRTPDVKAFLESPWSLDPASASPEPVPHILASSRQWDPASCTSLGTDKCEALLGLC  
QVRGGLPPFSEPSLVPWPPGRSLPKAVRPPLSWPPFSQQQTLPMVMSGEALGWLGQAGSLAMGAAPLGEF  
AKEDPMLAQEAGSALGSDVDDGTSFLLTAGPSSWPGEWGPGFRAGPPA

**TR**TRPLE**QKLISEEDLAANDILDYKDDDDK**V

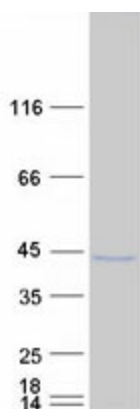
Tag:	C-Myc/DDK
Predicted MW:	34.3 kDa
Concentration:	>0.05 µg/µL as determined by microplate BCA method
Purity:	> 80% as determined by SDS-PAGE and Coomassie blue staining
Buffer:	25 mM Tris-HCl, 100 mM glycine, pH 7.3, 10% glycerol
Preparation:	Recombinant protein was captured through anti-DDK affinity column followed by conventional chromatography steps.
Note:	For testing in cell culture applications, please filter before use. Note that you may experience some loss of protein during the filtration process.
Storage:	Store at -80°C.
Stability:	Stable for 12 months from the date of receipt of the product under proper storage and handling conditions. Avoid repeated freeze-thaw cycles.
RefSeq:	<a href="#">NP_001012415</a>
Locus ID:	402381



[View online »](#)

UniProt ID:	<a href="#">Q5JUK2</a>
RefSeq Size:	1997
Cytogenetics:	9q34.3
RefSeq ORF:	984
Synonyms:	bA100C15.3; bHLHe80; C9orf157; NOHLH; ODG5; SPATA27; SPGF32; TEB2
Summary:	This gene encodes one of testis-specific transcription factors which are essential for spermatogenesis, oogenesis and folliculogenesis. This gene is located on chromosome 9. Mutations in this gene are associated with nonobstructive azoospermia. Alternatively spliced transcript variants encoding different isoforms have been found for this gene. [provided by RefSeq, Aug 2013]

### Product images:



Coomassie blue staining of purified SOHLH1 protein (Cat# [TP307282]). The protein was produced from HEK293T cells transfected with SOHLH1 cDNA clone (Cat# [RC207282]) using MegaTran 2.0 (Cat# [TT210002]).