

## Product datasheet for TP307244L

### PPIL6 (NM\_173672) Human Recombinant Protein

#### Product data:

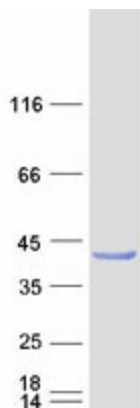
Product Type:	Recombinant Proteins
Description:	Recombinant protein of human peptidylprolyl isomerase (cyclophilin)-like 6 (PPIL6), transcript variant 1, 1 mg
Species:	Human
Expression Host:	HEK293T
Expression cDNA Clone or AA Sequence:	>RC207244 protein sequence <b>Red</b> =Cloning site <b>Green</b> =Tags(s)
	MARPQPCGPPHARCGSPSLPERPLQVKWGLFSCPINFQIAKSAENLKNNHPSKFEDPILVPLQEFAWHQ YLQEKRELKNETWEYSSSVISFVNGQFLGDALDLQKWAHEVWDIVDIKPSALYDALTEDFSKFLRDTK HDFVFLDICIDSSPIGRLIFELYCDVCPKTCKNFQVLCTGKAGFSQRGIRLHYKNSIFHRIVQNGWIQGG DIVYGKGDNGESIYGPTFEDENFSVPHNKRGLGMANKGRHSNGSQFYITLQATPYLDRKFVAFGQLIEG TEVLKQLELVPTQNERPIHMCRITDSGDPYA
	<b>TRTRPLEQKLISEEDLAANDILDYKDDDDKV</b>
Tag:	C-Myc/DDK
Predicted MW:	35 kDa
Concentration:	>0.05 µg/µL as determined by microplate BCA method
Purity:	> 80% as determined by SDS-PAGE and Coomassie blue staining
Buffer:	25 mM Tris-HCl, 100 mM glycine, pH 7.3, 10% glycerol
Preparation:	Recombinant protein was captured through anti-DDK affinity column followed by conventional chromatography steps.
Note:	For testing in cell culture applications, please filter before use. Note that you may experience some loss of protein during the filtration process.
Storage:	Store at -80°C.
Stability:	Stable for 12 months from the date of receipt of the product under proper storage and handling conditions. Avoid repeated freeze-thaw cycles.
RefSeq:	<a href="#">NP_775943</a>
Locus ID:	285755



[View online »](#)

UniProt ID:	<a href="#">Q8IXY8</a>
RefSeq Size:	4145
Cytogenetics:	6q21
RefSeq ORF:	933
Synonyms:	bA425D10.6; dj919F19.1; PPlase; RSPH12
Summary:	Probable inactive PPlase with no peptidyl-prolyl cis-trans isomerase activity.[UniProtKB/Swiss-Prot Function]

### Product images:



Coomassie blue staining of purified PPIL6 protein (Cat# [TP307244]). The protein was produced from HEK293T cells transfected with PPIL6 cDNA clone (Cat# [RC207244]) using MegaTran 2.0 (Cat# [TT210002]).