

Product datasheet for **TP307243**

TMEM188 (CNEP1R1) (NM_153261) Human Recombinant Protein

Product data:

Product Type:	Recombinant Proteins
Description:	Recombinant protein of human transmembrane protein 188 (TMEM188), 20 µg
Species:	Human
Expression Host:	HEK293T
Expression cDNA Clone or AA Sequence:	>RC207243 protein sequence Red =Cloning site Green =Tags(s)
	MNSLEQAEAPRVSLIPAVVSGNCQDLKAFERRLTEYIHCLQPATGRWRMLLIVSVCTATGAWNWLIDP ETQKVSFFTSLWNHPFFTISCITLIGLFFAGIHKRVVAPSIIAARCRTVLAEYNMSCDDTGKLLKPRPH VQ
	TR TRPLEQKLISEEDLAANDILDYKDDDDKV
Tag:	C-Myc/DDK
Predicted MW:	15.8 kDa
Concentration:	>0.05 µg/µL as determined by microplate BCA method
Purity:	> 80% as determined by SDS-PAGE and Coomassie blue staining
Buffer:	25 mM Tris-HCl, 100 mM glycine, pH 7.3, 10% glycerol
Preparation:	Recombinant protein was captured through anti-DDK affinity column followed by conventional chromatography steps.
Note:	For testing in cell culture applications, please filter before use. Note that you may experience some loss of protein during the filtration process.
Storage:	Store at -80°C.
Stability:	Stable for 12 months from the date of receipt of the product under proper storage and handling conditions. Avoid repeated freeze-thaw cycles.
RefSeq:	<u>NP_694993</u>
Locus ID:	255919
UniProt ID:	<u>Q8N9A8</u>
RefSeq Size:	2201


[View online »](#)

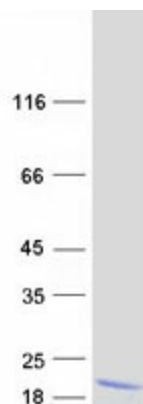
Cytogenetics: 16q12.1

RefSeq ORF: 426

Synonyms: C16orf69; NEP1-R1; NEP1R1; TMEM188; TMP125

Summary: This gene encodes a transmembrane protein that belongs to the Tmemb_18A family. A similar protein in yeast is a component of an endoplasmic reticulum-associated protein phosphatase complex and is thought to play a role in the synthesis of triacylglycerol. Alternate splicing results in multiple transcript variants. [provided by RefSeq, Aug 2013]

Product images:



Coomassie blue staining of purified CNEP1R1 protein (Cat# TP307243). The protein was produced from HEK293T cells transfected with CNEP1R1 cDNA clone (Cat# [RC207243]) using MegaTran 2.0 (Cat# [TT210002]).