

## Product datasheet for **TP307238L**

### LYRIC (MTDH) (NM\_178812) Human Recombinant Protein

#### Product data:

Product Type:	Recombinant Proteins
Description:	Recombinant protein of human metadherin (MTDH), 1 mg
Species:	Human
Expression Host:	HEK293T
Expression cDNA	>RC207238 protein sequence
Clone or AA Sequence:	Red=Cloning site Green=Tags(s)

MAARSWQDELAQQAEEGSARLREMLSVGLGFLRTELGLDLGLEPKRYPGWVILVGTGALGLLLLFLLGYG  
WAAACAGSRKKRRSPPRKREEAAVPAAPDDLALLKNLRSEEQKKKNRKKLSEKPKPNGRTVEVAEGEA  
VRTPQSVTAKQPPEIDKKNEKSKKNKKKSKSDAKAVQNSSRHDGKEVDEGAWETKISHREKRQQRKRDKV  
LTDGSLDSTIPGIENTITVTTEQLTTASFPVGSKKNKGDSHLNVQVSNFKSGKGDSTLQVSSGLNENLT  
VNGGGWNEKSVKLSSQISAGEEKWNSVSPASAGKRKAEPSAWSQDTGDANTNGKDWGRSWSDRSIFSGIG  
STAEPVSQSTTSYQWDVSRNQPYIDDEWSGLNGLSSADPNSDWNAPAEWGNVWVDEERASLLKSQEP  
DDQKVSDDDKEKGEGALPTGKSKKKKKKKKQGEDNSTAQDTEELEKEIREDLPVNTSKTRPKQEKAFSL  
KTISTSDPAEVLVKN SQPIKTLPPATSTEPSVILSKSDSDKSSSQVPILQETDKSKSNTKQNSVPPSQ  
KSETSWESPKQIKKKKKARRET

TRTRPLEQKLISEEDLAANDILDYKDDDDKV

Tag:	C-Myc/DDK
Predicted MW:	63.7 kDa
Concentration:	>0.05 µg/µL as determined by microplate BCA method
Purity:	> 80% as determined by SDS-PAGE and Coomassie blue staining
Buffer:	25 mM Tris-HCl, 100 mM glycine, pH 7.3, 10% glycerol
Bioactivity:	Surface Plasmon Resonance (SPR) (PMID: <a href="#">26149384</a> )
Preparation:	Recombinant protein was captured through anti-DDK affinity column followed by conventional chromatography steps.
Note:	For testing in cell culture applications, please filter before use. Note that you may experience some loss of protein during the filtration process.
Storage:	Store at -80°C.



[View online »](#)

**Stability:** Stable for 12 months from the date of receipt of the product under proper storage and handling conditions. Avoid repeated freeze-thaw cycles.

**RefSeq:** [NP\\_848927](#)

**Locus ID:** 92140

**UniProt ID:** [Q86UE4](#), [A0A024R9D2](#)

**RefSeq Size:** 7667

**Cytogenetics:** 8q22.1

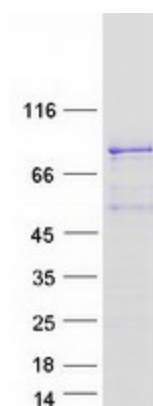
**RefSeq ORF:** 1746

**Synonyms:** 3D3; AEG-1; AEG1; LYRIC; LYRIC/3D3

**Summary:** Downregulates SLC1A2/EAAT2 promoter activity when expressed ectopically. Activates the nuclear factor kappa-B (NF-kappa-B) transcription factor. Promotes anchorage-independent growth of immortalized melanocytes and astrocytes which is a key component in tumor cell expansion. Promotes lung metastasis and also has an effect on bone and brain metastasis, possibly by enhancing the seeding of tumor cells to the target organ endothelium. Induces chemoresistance.[UniProtKB/Swiss-Prot Function]

**Protein Families:** Transmembrane

### Product images:



Coomassie blue staining of purified MTDH protein (Cat# [TP307238]). The protein was produced from HEK293T cells transfected with MTDH cDNA clone (Cat# [RC207238]) using MegaTran 2.0 (Cat# [TT210002]).