

Product datasheet for **TP307225L**

GFPT1 (NM_002056) Human Recombinant Protein

Product data:

Product Type:	Recombinant Proteins
Description:	Recombinant protein of human glutamine-fructose-6-phosphate transaminase 1 (GFPT1), 1 mg
Species:	Human
Expression Host:	HEK293T
Expression cDNA Clone or AA Sequence:	>RC207225 representing NM_002056 Red=Cloning site Green=Tags(s)

MCGIFAYLNYHVPRTTRREILETLIKGLQRLEYRGYDSAGVGFDDGGNDKDWEANACKIQLIKKKGKVKALD
EEVHKQQDMDLDIEFDVHLGIAHTRWATHGEPSPVNSHPQRSKDNNEFIVIHNGIITNYKDLKKFLESKG
YDFESETDTETIAKLVKMYDNRRESQDTSFTTLVERVIQQLLEGAFALVFKSVHFGQAVGTRRGSPLLIG
VRSEHKLSTDHIPILYRTGKDKKGCNLSRVDSTTCLFPVEEKAVEYFASDASAVIEHTNRVIFLEDDD
VAAVWDGRLSIHRIKRTAGDHPGRAVQTLQMEELQIMKGNFSSFMQKEIFEQPEVNTMRGRVNFDDYT
VNLGGLKDHIEIQRRLILACGTSYHAGVATRQVLEELTELPVMVELASDFLDRNTPVFRDDVCCFL
SQSGETADTLMGLRYCKERGALTVGITNTVGGSSISRETDCGVHINAGPEIGVASTKAYTSQFVSLVMFAL
MMCDDRISMQERRKEIMLGLKRLPDLIKEVLSMDDEIQKLATELYHQKSVLIMGRGYHYATCLEGALKIK
EITYMHSEGILAGELKHGPLALVDKLMVIMIMRDHTYAKCQNALQVVARQGRPVICDKEDTETIKN
TKRTIKVPHSVDCLQGILSVIPLQLLAFHLAVLRGYDVFPRNLAKSVTVE

TRTRPLEQKLISEEDLAANDILDYKDDDDKV

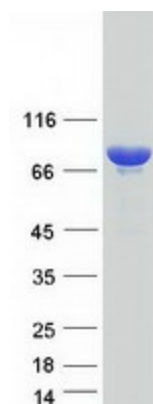
Tag:	C-Myc/DDK
Predicted MW:	76.6 kDa
Concentration:	>0.05 µg/µL as determined by microplate BCA method
Purity:	> 80% as determined by SDS-PAGE and Coomassie blue staining
Buffer:	25 mM Tris-HCl, 100 mM glycine, pH 7.3, 10% glycerol
Preparation:	Recombinant protein was captured through anti-DDK affinity column followed by conventional chromatography steps.
Note:	For testing in cell culture applications, please filter before use. Note that you may experience some loss of protein during the filtration process.
Storage:	Store at -80°C.



[View online »](#)

Stability:	Stable for 12 months from the date of receipt of the product under proper storage and handling conditions. Avoid repeated freeze-thaw cycles.
RefSeq:	<u>NP_002047</u>
Locus ID:	2673
UniProt ID:	<u>Q06210</u>
RefSeq Size:	3082
Cytogenetics:	2p13.3
RefSeq ORF:	2043
Synonyms:	CMS12; CMSTA1; GFA; GFAT; GFAT 1; GFAT1; GFAT1m; GFPT; GFPT1L; MSLG
Summary:	This gene encodes the first and rate-limiting enzyme of the hexosamine pathway and controls the flux of glucose into the hexosamine pathway. The product of this gene catalyzes the formation of glucosamine 6-phosphate. [provided by RefSeq, Sep 2008]
Protein Families:	Protease
Protein Pathways:	Alanine, aspartate and glutamate metabolism, Amino sugar and nucleotide sugar metabolism, Metabolic pathways

Product images:



Coomassie blue staining of purified GFPT1 protein (Cat# [TP307225]). The protein was produced from HEK293T cells transfected with GFPT1 cDNA clone (Cat# [RC207225]) using MegaTran 2.0 (Cat# [TT210002]).