

## Product datasheet for TP307225

### GFPT1 (NM\_002056) Human Recombinant Protein

#### Product data:

**Product Type:** Recombinant Proteins  
**Description:** Recombinant protein of human glutamine-fructose-6-phosphate transaminase 1 (GFPT1), 20 µg  
**Species:** Human  
**Expression Host:** HEK293T  
**Expression cDNA Clone or AA Sequence:** >RC207225 representing NM\_002056  
**Red**=Cloning site **Green**=Tags(s)

MCGIFAYLNYHVPRTREILETLIKGLQRLEYRGYDSAGVGFDDGGNDKDWEANACKIQLIKKKGKVKALD  
EEVHKQQDMDLDIEFDVHLGIAHTRWATHGEPSPVNSHPQRSKDNNEFIVIHNGIITNYKDLKKFLESKG  
YDFESETDTETIAKLVKMYDNRRESQDTSFTTLVERVIQQLLEGAFALVFKSVHFGQAVGTRRGSPLLIG  
VRSEHKLSTDHIPILYRTGKDKKGCNLSRVDSTTCLFPVEEKAVEYYFASDASAVIEHTNRVIFLEDDD  
VAAVWDGRLSIHRIKRTAGDHPGRAVQTLQMEELQIMKGNFSSFMQKEIFEQPEVNTMRGRVNFDDYT  
VNLGGLKDHIEIQRRLILACGTSYHAGVATRQVLEELTELPVMVELASDFLDRNTPVFRDDVCCFL  
SQSGETADTLMGLRYCKERGALTVGITNTVGSSISRETDCGVHINAGPEIGVASTKAYTSQFVSLVMFAL  
MMCDDRISMQERRKEIMLGLKRLPDLIKEVLSMDDEIQKLATELYHQKSVLIMGRGYHYATCLEGALKIK  
EITYMHSEGILAGELKHGPLALVDKLMVIMIMRDHTYAKCQNALQVVARQGRPVICDKEDTETIKN  
TKRTIKVPHSVDCLQGILSVIPLQLLAFHLAVLRGYDVFPRNLAKSVTVE

**TRTRPLEQKLISEEDLAANDILDYKDDDDKV**

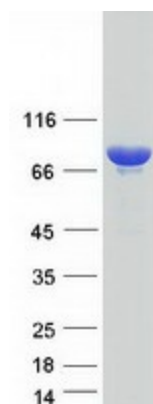
**Tag:** C-Myc/DDK  
**Predicted MW:** 76.6 kDa  
**Concentration:** >0.05 µg/µL as determined by microplate BCA method  
**Purity:** > 80% as determined by SDS-PAGE and Coomassie blue staining  
**Buffer:** 25 mM Tris-HCl, 100 mM glycine, pH 7.3, 10% glycerol  
**Preparation:** Recombinant protein was captured through anti-DDK affinity column followed by conventional chromatography steps.  
**Note:** For testing in cell culture applications, please filter before use. Note that you may experience some loss of protein during the filtration process.  
**Storage:** Store at -80°C.



[View online »](#)

<b>Stability:</b>	Stable for 12 months from the date of receipt of the product under proper storage and handling conditions. Avoid repeated freeze-thaw cycles.
<b>RefSeq:</b>	<u>NP_002047</u>
<b>Locus ID:</b>	2673
<b>UniProt ID:</b>	<u>Q06210</u>
<b>RefSeq Size:</b>	3082
<b>Cytogenetics:</b>	2p13.3
<b>RefSeq ORF:</b>	2043
<b>Synonyms:</b>	CMS12; CMSTA1; GFA; GFAT; GFAT 1; GFAT1; GFAT1m; GFPT; GFPT1L; MSLG
<b>Summary:</b>	This gene encodes the first and rate-limiting enzyme of the hexosamine pathway and controls the flux of glucose into the hexosamine pathway. The product of this gene catalyzes the formation of glucosamine 6-phosphate. [provided by RefSeq, Sep 2008]
<b>Protein Families:</b>	Protease
<b>Protein Pathways:</b>	Alanine, aspartate and glutamate metabolism, Amino sugar and nucleotide sugar metabolism, Metabolic pathways

### Product images:



Coomassie blue staining of purified GFPT1 protein (Cat# TP307225). The protein was produced from HEK293T cells transfected with GFPT1 cDNA clone (Cat# [RC207225]) using MegaTran 2.0 (Cat# [TT210002]).