

## Product datasheet for **TP307224M**

### GCLM (NM\_002061) Human Recombinant Protein

#### Product data:

Product Type:	Recombinant Proteins
Description:	Recombinant protein of human glutamate-cysteine ligase, modifier subunit (GCLM), 100 µg
Species:	Human
Expression Host:	HEK293T
Expression cDNA Clone or AA Sequence:	>RC207224 protein sequence <b>Red</b> =Cloning site <b>Green</b> =Tags(s)
	<p>MGTDSRAAKALLARARTLHLQTGNLLNWGRLRKKCPSTHSEELHDCIQKTLNEWSSQINPDLVREFPDVL ECTVSHAVEKINPDEREEMKVS AKLFIVESNSSSSTRSAVDMACSVLGVAQLDSVIIASPPIEDGVNLSL EHLQPYWEELENLVQSKKIVAIGTSDLDKTQLEQLYQWAQVKPNSNQVNLASCCVMPPDLTAFKQFDIQ LLTHNDPKELLSEASFQEALQESIPDIQAHEWVPLWLLRYSVIVKSRGIIKSKGYILQAKRRGS</p> <p><b>TRTRPLEQKLISEEDLAANDILDYKDDDDKV</b></p>
Tag:	C-Myc/DDK
Predicted MW:	30.5 kDa
Concentration:	>0.05 µg/µL as determined by microplate BCA method
Purity:	> 80% as determined by SDS-PAGE and Coomassie blue staining
Buffer:	25 mM Tris-HCl, 100 mM glycine, pH 7.3, 10% glycerol
Preparation:	Recombinant protein was captured through anti-DDK affinity column followed by conventional chromatography steps.
Note:	For testing in cell culture applications, please filter before use. Note that you may experience some loss of protein during the filtration process.
Storage:	Store at -80°C.
Stability:	Stable for 12 months from the date of receipt of the product under proper storage and handling conditions. Avoid repeated freeze-thaw cycles.
RefSeq:	<a href="#">NP_002052</a>
Locus ID:	2730
UniProt ID:	<a href="#">P48507</a>



[View online »](#)

RefSeq Size: 3074

Cytogenetics: 1p22.1

RefSeq ORF: 822

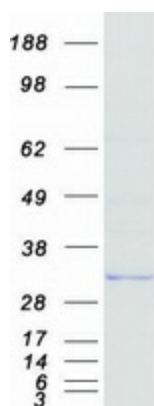
Synonyms: GLCLR

**Summary:** Glutamate-cysteine ligase, also known as gamma-glutamylcysteine synthetase, is the first rate limiting enzyme of glutathione synthesis. The enzyme consists of two subunits, a heavy catalytic subunit and a light regulatory subunit. Gamma glutamylcysteine synthetase deficiency has been implicated in some forms of hemolytic anemia. Alternative splicing results in multiple transcript variants encoding different isoforms. [provided by RefSeq, Apr 2015]

**Protein Families:** Druggable Genome

**Protein Pathways:** Glutathione metabolism, Metabolic pathways

### Product images:



Coomassie blue staining of purified GCLM protein (Cat# [TP307224]). The protein was produced from HEK293T cells transfected with GCLM cDNA clone (Cat# [RC207224]) using MegaTran 2.0 (Cat# [TT210002]).