

Product datasheet for **TP307224**

GCLM (NM_002061) Human Recombinant Protein

Product data:

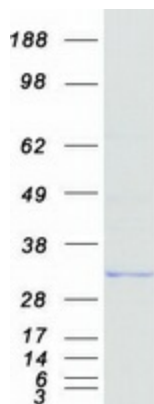
Product Type:	Recombinant Proteins
Description:	Recombinant protein of human glutamate-cysteine ligase, modifier subunit (GCLM)
Species:	Human
Expression Host:	HEK293T
Tag:	C-Myc/DDK
Predicted MW:	30.5 kDa
Concentration:	>50 ug/mL as determined by microplate BCA method
Purity:	> 80% as determined by SDS-PAGE and Coomassie blue staining
Buffer:	25 mM Tris.HCl, pH 7.3, 100 mM glycine, 10% glycerol
Preparation:	Recombinant protein was captured through anti-DDK affinity column followed by conventional chromatography steps.
Storage:	Store at -80°C.
Stability:	Stable for 12 months from the date of receipt of the product under proper storage and handling conditions. Avoid repeated freeze-thaw cycles.
RefSeq:	NP_002052
Locus ID:	2730
RefSeq Size:	3074
Cytogenetics:	1p22.1
RefSeq ORF:	822
Synonyms:	GLCLR
Summary:	Glutamate-cysteine ligase, also known as gamma-glutamylcysteine synthetase, is the first rate limiting enzyme of glutathione synthesis. The enzyme consists of two subunits, a heavy catalytic subunit and a light regulatory subunit. Gamma glutamylcysteine synthetase deficiency has been implicated in some forms of hemolytic anemia. Alternative splicing results in multiple transcript variants encoding different isoforms. [provided by RefSeq, Apr 2015]
Protein Families:	Druggable Genome



[View online »](#)

Protein Pathways: Glutathione metabolism, Metabolic pathways

Product images:



Coomassie blue staining of purified GCLM protein (Cat# TP307224). The protein was produced from HEK293T cells transfected with GCLM cDNA clone (Cat# [RC207224]) using MegaTran 2.0 (Cat# [TT210002]).