

## Product datasheet for TP307214

### SCEL (NM\_003843) Human Recombinant Protein

#### Product data:

Product Type:	Recombinant Proteins
Description:	Recombinant protein of human sciellin (SCEL), transcript variant 1, 20 µg
Species:	Human
Expression Host:	HEK293T
Expression cDNA Clone or AA Sequence:	>RC207214 protein sequence <b>Red</b> =Cloning site <b>Green</b> =Tags(s)

MSNVTLRKMSPTGNEMKSTTQGTTRKQQDFHEVNKRRTFLQDNSWIKKRPEEEKDENYGRVVLNRHNS  
HD  
ALDRKVN ERDVPKATISRYSSDDTLDRISDRNDAAKYKANTLDNQLTNRSM SVFRSLEVTKLQPGGSLN  
ANTSNTIATSATTPVKKKRQSWFPPPPGYNASSSTGTRRREP GVHPPPKPSSPVSTNQLRQDNRQ  
IHPPKPGVYTETNRS AERNISEELDNLIKMNKSLNRNQGLDSLFRANPKVEEREKRAKSLES LIYMSTRT  
DKDGKGIQSLGSPKVNQRTDKNEKGRQNLESVAKVNARMNKTSRRSEDLDNATEVNPKGHENTTGKKD  
L  
DGLIKVDPETNKNITRGQSLDNLIKVTPEVKRSNQGSKDLN NFIKVYPGTEKSTEGGQSLDSLIVTPER  
NRTNQGNQDLENLIKVIPSANKSSEQGLDEHINVSPKAVKNTDGKQDLDKLIKVNPEIFTNNQRNQDLA  
N  
LIKVNPAVIRNNQSQDLDNLIKVKPSALRNTNRDQNL ENLIEVNSHVSENKNGSSNTGAKQAGPQDTVVY  
TRTYVENSKSPKDG YQENISGKYIQTVYSTDRSVIERDMCTYCRKPLGVETKMILDELQICCHSTCFKC  
EICKQPLENLQAGDSIWIYRQTIHCEPCYSKIMAKWIP

**TRTRPLEQKLISEEDLAANDILDYKDDDDKV**

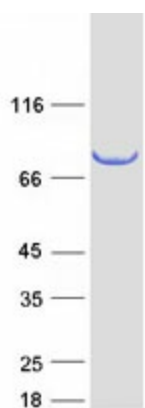
Tag:	C-Myc/DDK
Predicted MW:	75.1 kDa
Concentration:	>0.05 µg/µL as determined by microplate BCA method
Purity:	> 80% as determined by SDS-PAGE and Coomassie blue staining
Buffer:	25 mM Tris-HCl, 100 mM glycine, pH 7.3, 10% glycerol
Preparation:	Recombinant protein was captured through anti-DDK affinity column followed by conventional chromatography steps.



[View online »](#)

<b>Note:</b>	For testing in cell culture applications, please filter before use. Note that you may experience some loss of protein during the filtration process.
<b>Storage:</b>	Store at -80°C.
<b>Stability:</b>	Stable for 12 months from the date of receipt of the product under proper storage and handling conditions. Avoid repeated freeze-thaw cycles.
<b>RefSeq:</b>	<a href="#">NP_003834</a>
<b>Locus ID:</b>	8796
<b>UniProt ID:</b>	<a href="#">O95171</a>
<b>RefSeq Size:</b>	3180
<b>Cytogenetics:</b>	13q22.3
<b>RefSeq ORF:</b>	2004
<b>Summary:</b>	The protein encoded by this gene is a precursor to the cornified envelope of terminally differentiated keratinocytes. This protein localizes to the periphery of cells and may function in the assembly or regulation of proteins in the cornified envelope. Transcript variants encoding different isoforms exist. A transcript variant utilizing an alternative polyA signal has been described in the literature, but its full-length nature has not been determined. [provided by RefSeq, Jul 2008]

### Product images:



Coomassie blue staining of purified SCEL protein (Cat# TP307214). The protein was produced from HEK293T cells transfected with SCEL cDNA clone (Cat# [RC207214]) using MegaTran 2.0 (Cat# [TT210002]).