

## Product datasheet for TP307212L

### TMEFF1 (NM\_003692) Human Recombinant Protein

#### Product data:

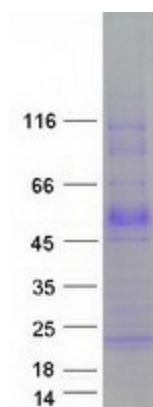
<b>Product Type:</b>	Recombinant Proteins
<b>Description:</b>	Purified recombinant protein of Homo sapiens transmembrane protein with EGF-like and two follistatin-like domains 1 (TMEFF1), 1 mg
<b>Species:</b>	Human
<b>Expression Host:</b>	HEK293T
<b>Expression cDNA Clone or AA Sequence:</b>	>RC207212 protein sequence <b>Red</b> =Cloning site <b>Green</b> =Tags(s)
	<p>MGAAAAEAPLRLPAAPPLAFCCYTSVLLLFAFSLPGSRASNQPPGGGGGGSGGDCPGGKGSINCSSELNVR ESDVRVCDDESSCKYGGVCKEDGDGLKACQFQCHTNYPVCGSNGDTYQNECFLRRAACKHQKEITVIAR GPCYSDNGSGEGEEEGSGAEVHRKHSKCGPCKYKAECDEDAENVGCVCNIDCSGYSFNPVCASDGSSY NNPCFVREASCIKQEIQIDIRHLGHCTDTDTSLLGKKDDGLQYRPDVKDASDQREDVYIGNHMPCPENLN GYCIHGKCEFIYSTQKASCRCESGYTGQHCEKTDIFSILYVPSRQKLTHVLIAAIIIGAVQIAIIVAIVMC ITRKCPKNNRGRRRQKQNLGHFTSDTSSRMV</p> <p><b>TRTRPLEQKLISEEDLAANDILDYKDDDDKV</b></p>
<b>Tag:</b>	C-Myc/DDK
<b>Predicted MW:</b>	40.8 kDa
<b>Concentration:</b>	>0.05 µg/µL as determined by microplate BCA method
<b>Purity:</b>	> 80% as determined by SDS-PAGE and Coomassie blue staining
<b>Buffer:</b>	25 mM Tris-HCl, 100 mM glycine, pH 7.3, 10% glycerol
<b>Preparation:</b>	Recombinant protein was captured through anti-DDK affinity column followed by conventional chromatography steps.
<b>Note:</b>	For testing in cell culture applications, please filter before use. Note that you may experience some loss of protein during the filtration process.
<b>Storage:</b>	Store at -80°C.
<b>Stability:</b>	Stable for 12 months from the date of receipt of the product under proper storage and handling conditions. Avoid repeated freeze-thaw cycles.
<b>RefSeq:</b>	<u><a href="#">NP_003683</a></u>



[View online »](#)

Locus ID:	8577
UniProt ID:	<a href="#">Q8IYR6</a>
RefSeq Size:	2501
Cytogenetics:	9q31.1
RefSeq ORF:	1140
Synonyms:	C9orf2; CT120.1; H7365; TR-1
Summary:	May inhibit NODAL and BMP signaling during neural patterning (By similarity). May be a tumor suppressor in brain cancers.[UniProtKB/Swiss-Prot Function]
Protein Families:	Transmembrane

### Product images:



Coomassie blue staining of purified TMEFF1 protein (Cat# [TP307212]). The protein was produced from HEK293T cells transfected with TMEFF1 cDNA clone (Cat# [RC207212]) using MegaTran 2.0 (Cat# [TT210002]).