

Product datasheet for TP307209

Choline kinase alpha (CHKA) (NM_212469) Human Recombinant Protein

Product data:

Product Type:	Recombinant Proteins
Description:	Recombinant protein of human choline kinase alpha (CHKA), transcript variant 2, 20 µg
Species:	Human
Expression Host:	HEK293T
Expression cDNA Clone or AA Sequence:	>RC207209 representing NM_212469 Red=Cloning site Green=Tags(s)
	MKTKFCTGGEAEPSPLGLLLSCGSGSAAPAPGVGQQRDAASDLESKQLGGQQPPLALPPPPPLPLPLP QPPPPQPPADEQPEPRTRRRAYLWCKEFLPGAWRGLREDEFHISVIRGGLSNMLFQCCLPDTTATLGDEP RKVLLRLYGAILQVGAEAMVLESVMFAILAERSLGPPLYGIFPQGRLEQFIPSRRLDTEELGLPDISAEI AEKMATFHGMKMPFNKEPKWLFGTMEKYLKEVLRIFTEESRIKKLHLLSYNLPLELENLRSLLSTPS PVVFCNDQCQEGNILLLEGRENSEKQKLMLIDFEYSSYNYRGFDIGNHFCEWMYDYSYEKYPFFRANIRK YPTKKQQLHFISSYLPAFQNDNFENLSTEEKSIIKEEMLLEVNRFALASHFLWGQWSIVQAKISSIEFGYM DYAQRFDAYFHQKRKLGV
	TRTRPLEQKLISEEDLAANDILDYKDDDDKV
Tag:	C-Myc/DDK
Predicted MW:	50 kDa
Concentration:	>0.05 µg/µL as determined by microplate BCA method
Purity:	> 80% as determined by SDS-PAGE and Coomassie blue staining
Buffer:	25 mM Tris-HCl, 100 mM glycine, pH 7.3, 10% glycerol
Preparation:	Recombinant protein was captured through anti-DDK affinity column followed by conventional chromatography steps.
Note:	For testing in cell culture applications, please filter before use. Note that you may experience some loss of protein during the filtration process.
Storage:	Store at -80°C.
Stability:	Stable for 12 months from the date of receipt of the product under proper storage and handling conditions. Avoid repeated freeze-thaw cycles.
RefSeq:	<u>NP_997634</u>



[View online »](#)

Locus ID: 1119
UniProt ID: [P35790](#)
RefSeq Size: 2679
Cytogenetics: 11q13.2
RefSeq ORF: 1317

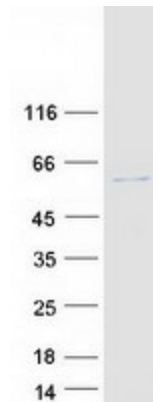
Synonyms: CHK; CK; CKI; EK

Summary: The major pathway for the biosynthesis of phosphatidylcholine occurs via the CDP-choline pathway. The protein encoded by this gene is the initial enzyme in the sequence and may play a regulatory role. The encoded protein also catalyzes the phosphorylation of ethanolamine. Two transcript variants encoding different isoforms have been found for this gene. [provided by RefSeq, Jul 2008]

Protein Families: Druggable Genome

Protein Pathways: Glycerophospholipid metabolism, Metabolic pathways

Product images:



Coomassie blue staining of purified CHKA protein (Cat# TP307209). The protein was produced from HEK293T cells transfected with CHKA cDNA clone (Cat# [RC207209]) using MegaTran 2.0 (Cat# [TT210002]).