

Product datasheet for **TP307206L**

RAB28 (NM_001017979) Human Recombinant Protein

Product data:

Product Type:	Recombinant Proteins
Description:	Recombinant protein of human RAB28, member RAS oncogene family (RAB28), transcript variant 1, 1 mg
Species:	Human
Expression Host:	HEK293T
Expression cDNA Clone or AA Sequence:	>RC207206 protein sequence Red =Cloning site Green =Tags(s)
	<p>MSDSEESQDRQLKIVLGDGASGKTSLTTCFAQETFGKQYKQTIGLDFFLRRITLPGNLNVTLQIWDIG GQTIGGKMLDKYIYGAQGVLLVYDITNYQSFENLEDWYTVVKKVSEESQPLVALVGNKIDLEHMRTIK PEKHLRFCQENGFSHFVSAKTGDSVFLCFQKVAEILGIKLNKAEIEQSQRVVKADIVNYNQEPMSRTV NPPRSSMCAVQ</p> <p>TRTRPLEQKLISEEDLAANDILDYKDDDDKV</p>
Tag:	C-Myc/DDK
Predicted MW:	24.7 kDa
Concentration:	>0.05 µg/µL as determined by microplate BCA method
Purity:	> 80% as determined by SDS-PAGE and Coomassie blue staining
Buffer:	25 mM Tris-HCl, 100 mM glycine, pH 7.3, 10% glycerol
Preparation:	Recombinant protein was captured through anti-DDK affinity column followed by conventional chromatography steps.
Note:	For testing in cell culture applications, please filter before use. Note that you may experience some loss of protein during the filtration process.
Storage:	Store at -80°C.
Stability:	Stable for 12 months from the date of receipt of the product under proper storage and handling conditions. Avoid repeated freeze-thaw cycles.
RefSeq:	<u>NP_001017979</u>
Locus ID:	9364



[View online »](#)

UniProt ID: [P51157](#)

RefSeq Size: 1732

Cytogenetics: 4p15.33

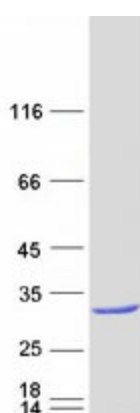
RefSeq ORF: 663

Synonyms: CORD18

Summary: This gene encodes a member of the Rab subfamily of Ras-related small GTPases. The encoded protein may be involved in regulating intracellular trafficking. Alternative splicing results in multiple transcript variants. Pseudogenes of this gene are found on chromosomes 9 and X. [provided by RefSeq, Apr 2009]

Protein Families: Druggable Genome

Product images:



Coomassie blue staining of purified RAB28 protein (Cat# [TP307206]). The protein was produced from HEK293T cells transfected with RAB28 cDNA clone (Cat# [RC207206]) using MegaTran 2.0 (Cat# [TT210002]).