

Product datasheet for TP307173L

DDX59 (NM_001031725) Human Recombinant Protein

Product data:

Product Type:	Recombinant Proteins
Description:	Recombinant protein of human DEAD (Asp-Glu-Ala-Asp) box polypeptide 59 (DDX59), 1 mg
Species:	Human
Expression Host:	HEK293T
Expression cDNA Clone or AA Sequence:	>RC207173 protein sequence Red =Cloning site Green =Tags(s)

MFVPRSLKIKRNANDDGKSCVAKIIPDPEDLQLDKSRDVPVDAVATEAATIDRHISESCFPSPGGQLA
EVHSVSPEQGAKDSEHPSEEPVKSFSKTQRWAEPGEPICVVCGRYGEYICDKTDEDVCSLECKAKHLLQVK
EKEEKSKLSNPQKADSEPEPLNASYVYKEHPFILNLQEDQIENLKQQLGILVQGGQEVTRPIIDFEHCSL
PEVLNHNLLKSGYEVPTPIQMOMIPVGLLGRDILASADTGSGKTAFLLPVIMRALFESKTPSALILTPT
RELAIQIERQAKELMSGLPRMKTVLLVGGPLPQQLYRLQQHVKVIATPGRLLDIIKQSSVELCGVKIV
VVDEADTMLKMGFQQVLDILENIPNDCQTLVSATIPTSIEQLASQLLHNPVRIITGEKNLPCANVRQI
ILWVEDPAKKKKLFEILNDKKLFKPPVLVFDCKLGADLLSEAVQKITGLKRISIHSEKSQIERKNILKG
LLEGDYEVVSTGVLGRGLDLISVRLVNFDMPSMDEYVHQIGRVGRLGQNGTAITFINNNSKRLFWDI
AKRVKPTGSILPPQLLNSPYLHDQKRKEQQKDKQTQNDLVTGANLMDIIRKHKDKSNSQK

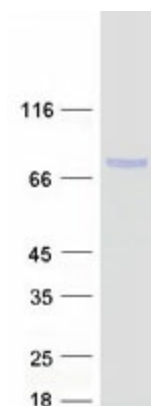
TRTRPLEQKLISEEDLAANDILDYKDDDDKV

Tag:	C-Myc/DDK
Predicted MW:	68.6 kDa
Concentration:	>0.05 µg/µL as determined by microplate BCA method
Purity:	> 80% as determined by SDS-PAGE and Coomassie blue staining
Buffer:	25 mM Tris-HCl, 100 mM glycine, pH 7.3, 10% glycerol
Preparation:	Recombinant protein was captured through anti-DDK affinity column followed by conventional chromatography steps.
Note:	For testing in cell culture applications, please filter before use. Note that you may experience some loss of protein during the filtration process.
Storage:	Store at -80°C.



[View online »](#)

Stability:	Stable for 12 months from the date of receipt of the product under proper storage and handling conditions. Avoid repeated freeze-thaw cycles.
RefSeq:	NP_001026895
Locus ID:	83479
UniProt ID:	Q5T1V6
RefSeq Size:	2337
Cytogenetics:	1q32.1
RefSeq ORF:	1857
Synonyms:	OFD5; ZNHIT5

Product images:

Coomassie blue staining of purified DDX59 protein (Cat# [TP307173]). The protein was produced from HEK293T cells transfected with DDX59 cDNA clone (Cat# [RC207173]) using MegaTran 2.0 (Cat# [TT210002]).