

## Product datasheet for **TP307161M**

### **KLHL6 (NM\_130446) Human Recombinant Protein**

#### Product data:

Product Type:	Recombinant Proteins
Description:	Recombinant protein of human kelch-like 6 (Drosophila) (KLHL6), 100 µg
Species:	Human
Expression Host:	HEK293T
Expression cDNA Clone or AA Sequence:	>RC207161 protein sequence <b>Red</b> =Cloning site <b>Green</b> =Tags(s)

MGDVVEKSLEGPLAPSTDEPSQKTGDLVEILNGEKVKFDDAGLSLILQNGLETLRMENALTDVILCVDIQ  
EFSCHRWVLAASNYFRAMFCNDLKEKYEKRIIIKGVDAETMHTLLDYTYTSKALITKQNVQRVLEAANL  
FQFLRMVDACASFLTEALNPENCVGILRLADTHSLDSLKKQVQSYIIQNQVQILNSEEFLDLPVDTLHHI  
LKSDDLVYTEEAQVFETVMSWVRHKPSERLCLLPYVLENVRLPLDPWYFVETVEADPLIRQCPEVFPLL  
QEARMYHLSGNEIISERTKPRMHEFQSEVFMIIIGGCTKDERFVAEVTCLDPLRRSRLEVAKLPLTEHELE  
SENKKWVEFACVTLKNEVYISGGKETQHDVWKYNSSINKWQIEYLNIGRWRHKMVLGGKVVYVIGGFDG  
LQRINNVETYDPFHNCWSEAAPLLVHVSSFAATSHKKLYVIGGGPNGKLATDKTQCYPSTNKWSLKAA  
MPVEAKCINAVSFRDRIYVGGAMRALYAYSPLEDSWCLVTQLSHERASCGIAPCNNRLYITGGRDEKNE  
VIATVLCWDPEAQKLTEECVLPGRVSHHGVSVTIRKSYTHIRRIVPGAVSV

**TRTRPLEQKLISEEDLAANDILDYKDDDDKV**

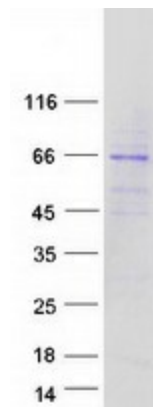
Tag:	C-Myc/DDK
Predicted MW:	70.2 kDa
Concentration:	>0.05 µg/µL as determined by microplate BCA method
Purity:	> 80% as determined by SDS-PAGE and Coomassie blue staining
Buffer:	25 mM Tris-HCl, 100 mM glycine, pH 7.3, 10% glycerol
Preparation:	Recombinant protein was captured through anti-DDK affinity column followed by conventional chromatography steps.
Note:	For testing in cell culture applications, please filter before use. Note that you may experience some loss of protein during the filtration process.
Storage:	Store at -80°C.



[View online »](#)

<b>Stability:</b>	Stable for 12 months from the date of receipt of the product under proper storage and handling conditions. Avoid repeated freeze-thaw cycles.
<b>RefSeq:</b>	<a href="#">NP_569713</a>
<b>Locus ID:</b>	89857
<b>UniProt ID:</b>	<a href="#">Q8WZ60</a>
<b>RefSeq Size:</b>	6320
<b>Cytogenetics:</b>	3q27.1
<b>RefSeq ORF:</b>	1830
<b>Summary:</b>	This gene encodes a member of the kelch-like (KLHL) family of proteins, which is involved in B-lymphocyte antigen receptor signaling and germinal-center B-cell maturation. The encoded protein contains an N-terminal broad-complex, tramtrack and bric a brac (BTB) domain that facilitates protein binding and dimerization, a BTB and C-terminal kelch (BACK) domain, and six C-terminal kelch repeat domains. Naturally occurring mutations in this gene are associated with chronic lymphocytic leukemia. Alternative splicing results in multiple transcript variants. [provided by RefSeq, Feb 2017]

### Product images:



Coomassie blue staining of purified KLHL6 protein (Cat# [TP307161]). The protein was produced from HEK293T cells transfected with KLHL6 cDNA clone (Cat# [RC207161]) using MegaTran 2.0 (Cat# [TT210002]).