

Product datasheet for **TP307152M**

Cryptochrome I (CRY1) (NM_004075) Human Recombinant Protein

Product data:

Product Type: Recombinant Proteins

Description: Recombinant protein of human cryptochrome 1 (photolyase-like) (CRY1), 100 µg

Species: Human

Expression Host: HEK293T

**Expression cDNA Clone
or AA Sequence:** >RC207152 protein sequence
Red=Cloning site **Green**=Tags(s)

MGVNAVHWFRKGLRLHDNPALKECIQGADTIRCVYILDPFAGSSNVGINRWRFLQLQCLEDLDANLRKLN
SRLFVIRGQPADVFPRLFKEWNITKLSIEYDSEPFGERDAAIKKLATEAGVEVIVRISHTLYDLDKIIE
LNGGQPPLTYKRFQTLISKMEPLEIPVETITSEVIEKCTTPLSDDHDEKYGVPSLEELGFDTDGLSSAWW
PGGETEALTRLERHLERKAWVANFERPRMNANLLASPTGLSPYLRFGCLSCRLFYFKLTDLYKKVKKNS
SPPLSLYGQLLWREFFYTAATNNPRFDKMEGNPICVQIPWDKNPEALAKWAEGRTGFPWIDAIMTQLRQE
GWIHHLARHAVACFLTRGDLWISWEEGMKVFEELLLDADWSINAGSWMWLSCSFFQFFHCYCPVGFGR
RTDPNGDYIRRYLPVLRGFPAKYIYDPWNAPEGIQKVAKCLIGVNYPKPMVNHAESRLNIERMKQIYQQ
LSRYRGLGLLASVPSNPNNGGFMGYSAENIPGCSSSGSCSQSGSILHYAHGDSQQTHLLKQGRSSMGTG
LSGGKRPSQEEDTQSIGPKVQRQSTN

TRTRPLEQKLISEEDLAANDILDYKDDDDKV

Tag: C-Myc/DDK

Predicted MW: 66.2 kDa

Concentration: >0.05 µg/µL as determined by microplate BCA method

Purity: > 80% as determined by SDS-PAGE and Coomassie blue staining

Buffer: 25 mM Tris-HCl, 100 mM glycine, pH 7.3, 10% glycerol

Preparation: Recombinant protein was captured through anti-DDK affinity column followed by conventional chromatography steps.

Note: For testing in cell culture applications, please filter before use. Note that you may experience some loss of protein during the filtration process.

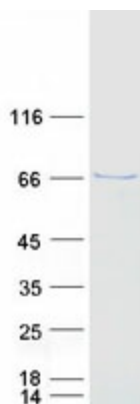
Storage: Store at -80°C.



[View online »](#)

Stability:	Stable for 12 months from the date of receipt of the product under proper storage and handling conditions. Avoid repeated freeze-thaw cycles.
RefSeq:	NP_004066
Locus ID:	1407
UniProt ID:	Q16526 , A2I2P0
RefSeq Size:	3310
Cytogenetics:	12q23.3
RefSeq ORF:	1758
Synonyms:	DSPD; PHLL1
Summary:	This gene encodes a flavin adenine dinucleotide-binding protein that is a key component of the circadian core oscillator complex, which regulates the circadian clock. This gene is upregulated by CLOCK/ARNTL heterodimers but then represses this upregulation in a feedback loop using PER/CRY heterodimers to interact with CLOCK/ARNTL. Polymorphisms in this gene have been associated with altered sleep patterns. The encoded protein is widely conserved across plants and animals. Loss of the related gene in mouse results in a shortened circadian cycle in complete darkness. [provided by RefSeq, Jan 2014]
Protein Families:	Druggable Genome
Protein Pathways:	Circadian rhythm - mammal

Product images:



Coomassie blue staining of purified CRY1 protein (Cat# [TP307152]). The protein was produced from HEK293T cells transfected with CRY1 cDNA clone (Cat# [RC207152]) using MegaTran 2.0 (Cat# [TT210002]).