

## Product datasheet for TP307144L

### PPM1K (NM\_152542) Human Recombinant Protein

#### Product data:

<b>Product Type:</b>	Recombinant Proteins
<b>Description:</b>	Recombinant protein of human protein phosphatase 1K (PP2C domain containing) (PPM1K), 1 mg
<b>Species:</b>	Human
<b>Expression Host:</b>	HEK293T
<b>Expression cDNA Clone or AA Sequence:</b>	>RC207144 protein sequence <b>Red</b> =Cloning site <b>Green</b> =Tags(s)
	MSTAALITLVRSGGNQVRRRVLLSSRLLQDDRRVTPTCHSSTSEPRCSRFPDGGSGSPATWDNFGIWDNR IDEPILLPPSIKYGKPIPKISLEKVGCSQIGKRKENEDRFDFQAQLTDEVLYFAVDGHHGPPAAADFCHT HMEKCIDMLLPKEKNLETLTFLAFLAIDKAFSSHARLSADATLLTSGTTATVALLRDGIELVVASVGDSR AILCRKKGKPMKLTIDHTPERKDEKERIKKCGGFVAWNSLGQPHVNGRLAMTRSIGDLDLKTSGVIAEPET KRIKLHHADDSFLVLTDDGINFMVNSQEICDFVNQCHDPNEAAHAVTEQAIQYGTEDNSTAVVVPFGAWG KYKNSEINFSSRSFASSGRWA
	<b>TRTRPLEQKLISEEDLAANDILDYKDDDDKV</b>
<b>Tag:</b>	C-Myc/DDK
<b>Predicted MW:</b>	40.8 kDa
<b>Concentration:</b>	>0.05 µg/µL as determined by microplate BCA method
<b>Purity:</b>	> 80% as determined by SDS-PAGE and Coomassie blue staining
<b>Buffer:</b>	25 mM Tris-HCl, 100 mM glycine, pH 7.3, 10% glycerol
<b>Preparation:</b>	Recombinant protein was captured through anti-DDK affinity column followed by conventional chromatography steps.
<b>Note:</b>	For testing in cell culture applications, please filter before use. Note that you may experience some loss of protein during the filtration process.
<b>Storage:</b>	Store at -80°C.
<b>Stability:</b>	Stable for 12 months from the date of receipt of the product under proper storage and handling conditions. Avoid repeated freeze-thaw cycles.
<b>RefSeq:</b>	<u><a href="#">NP_689755</a></u>



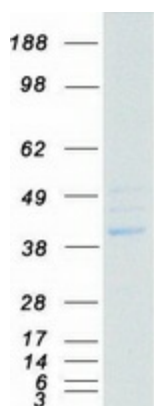
[View online »](#)

Locus ID: 152926  
UniProt ID: [Q8N3J5](#)  
RefSeq Size: 6590  
Cytogenetics: 4q22.1  
RefSeq ORF: 1116  
Synonyms: BDP; MSUDMV; PP2Ckappa; PP2Cm; PTMP; UG0882E07

**Summary:** This gene encodes a member of the PPM family of Mn<sup>2+</sup>/Mg<sup>2+</sup>-dependent protein phosphatases. The encoded protein, essential for cell survival and development, is targeted to the mitochondria where it plays a key role in regulation of the mitochondrial permeability transition pore. [provided by RefSeq, Sep 2012]

**Protein Families:** Phosphatase

### Product images:



Coomassie blue staining of purified PPM1K protein (Cat# [TP307144]). The protein was produced from HEK293T cells transfected with PPM1K cDNA clone (Cat# [RC207144]) using MegaTran 2.0 (Cat# [TT210002]).