

Product datasheet for **TP307143L**

KCNRG (NM_173605) Human Recombinant Protein

Product data:

Product Type:	Recombinant Proteins
Description:	Recombinant protein of human potassium channel regulator (KCNRG), transcript variant 1, 1 mg
Species:	Human
Expression Host:	HEK293T
Expression cDNA Clone or AA Sequence:	>RC207143 protein sequence Red =Cloning site Green =Tags(s)
	 MSSQELVTLNVGGKIFTRFSTIKQFPASRLARMLDGRDQEFKMGVGGQIFVDRDGDLSFILDFLRTHQL LLPTEFSDYLRLQREALFYELRSLVDLLNPYLLQPRPALVEVHFLSRNTQAFFRVFGSCSKTIEMLTGRI TVFTEQPSAPTWNGNFFPPQMTLLPLPPQRPSYHDLVFCGSDSTTDNQTGVRYVSIKPDNRKLANGTNV LGLLIDTLLKEGFHLVSTRTVSSEDKTECYSEFERIKSPEVLITNETPKPETIIIIPEQSQIKK TRTRPLEQKLISEEDLAANDILDYKDDDDKV
Tag:	C-Myc/DDK
Predicted MW:	30.9 kDa
Concentration:	>0.05 µg/µL as determined by microplate BCA method
Purity:	> 80% as determined by SDS-PAGE and Coomassie blue staining
Buffer:	25 mM Tris-HCl, 100 mM glycine, pH 7.3, 10% glycerol
Preparation:	Recombinant protein was captured through anti-DDK affinity column followed by conventional chromatography steps.
Note:	For testing in cell culture applications, please filter before use. Note that you may experience some loss of protein during the filtration process.
Storage:	Store at -80°C.
Stability:	Stable for 12 months from the date of receipt of the product under proper storage and handling conditions. Avoid repeated freeze-thaw cycles.
RefSeq:	<u>NP_775876</u>
Locus ID:	283518

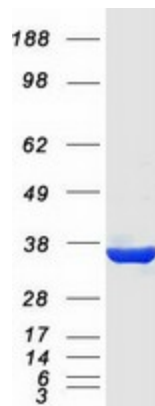


[View online »](#)

UniProt ID: [Q8N5I3](#)
RefSeq Size: 1527
Cytogenetics: 13q14.2
RefSeq ORF: 816
Synonyms: DLTET

Summary: This gene encodes a protein which regulates the activity of voltage-gated potassium channels. This gene is on chromosome 13 and overlaps the gene for tripartite motif containing 13 on the same strand. Multiple transcript variants encoding different isoforms have been found for this gene. [provided by RefSeq, Feb 2012]

Product images:



Coomassie blue staining of purified KCNRG protein (Cat# [TP307143]). The protein was produced from HEK293T cells transfected with KCNRG cDNA clone (Cat# [RC207143]) using MegaTran 2.0 (Cat# [TT210002]).