

## Product datasheet for TP307141L

### LRWD1 (NM\_152892) Human Recombinant Protein

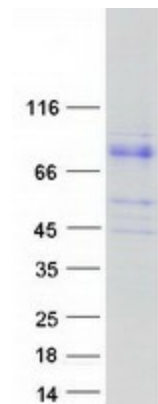
#### Product data:

|                                       |  |
|---------------------------------------|--|
| Product Type:                         | Recombinant Proteins   |
| Description:                          | Purified recombinant protein of Homo sapiens leucine-rich repeats and WD repeat domain containing 1 (LRWD1), 1 mg  |
| Species:                              | Human  |
| Expression Host:                      | HEK293T  |
| Expression cDNA Clone or AA Sequence: | >RC207141 protein sequence<br><span style="color: red;">Red</span> =Cloning site <span style="color: green;">Green</span> =Tags(s)<br><br>MGPLSARLLMQRGRPKSDRLGKIRSLDLSGLELLSEHLDPKLLCRLTQLQELDLSNNHLETLPDNLGLSH<br>LRVLCANNQLGDVTALCQFPKLEELSLEGNPFLTVNDNLKVSFLLPTLRKVNGKDASSTYSQVENLNRE<br>LTSRVTAHWEKFMATLGPEEEAEKAQADFVKSAVRDVRYGPESLSEFTQWRVRMISEELVAASRTQVQKA<br>NSPEKPPEAGAAHKPRARLAALKRPDDVPLSLSPSKRACASPSAQVEGSPVAGSDGSQPAVKLEPLHFLQ<br>CHSKNNSPQDLETQLWACAFEPAAWEEGATSQTVATCGGEAVCVIDCQTGIVLHKYKAPGEEFFSVAWTAL<br>MVVTQAGHKKRWSVLAAAGLRGLVRLHVRAGFCCGVIRAHKKAIALCFSPAETHLFTASYDKRIILW<br>DIGVPNQDYEFQASQLLTDTTISPLRLCPVASCPCDARLLAGCEGGCCCWDVRLDQPQKRRVCEVEFVS<br>EGSEASGRRVDGLAFVNEDIVASKGSLGTICLWSWRQTWGGRGSQSTVAVVVLARLQWSSTELAYFSL<br>ACPDKGIVLCGDEEGNVWLYDVSNIKQPPLLPAALQAPTQILKWPQPWALGQVVTMTMNTVVANASF<br>T<br>YLTALTDSNIVAIWGRM<br><br><span style="color: red;">TR</span> TRPLEQKLISEEDLAANDILDYKDDDDKV |
| Tag:                                  | C-Myc/DDK  |
| Predicted MW:                         | 70.7 kDa   |
| Concentration:                        | >0.05 µg/µL as determined by microplate BCA method   |
| Purity:                               | > 80% as determined by SDS-PAGE and Coomassie blue staining  |
| Buffer:                               | 25 mM Tris-HCl, 100 mM glycine, pH 7.3, 10% glycerol   |
| Preparation:                          | Recombinant protein was captured through anti-DDK affinity column followed by conventional chromatography steps.   |
| Note:                                 | For testing in cell culture applications, please filter before use. Note that you may experience some loss of protein during the filtration process.   |


[View online »](#)

|                          |   |
|--------------------------|---|
| <b>Storage:</b>          | Store at -80°C.   |
| <b>Stability:</b>        | Stable for 12 months from the date of receipt of the product under proper storage and handling conditions. Avoid repeated freeze-thaw cycles.   |
| <b>RefSeq:</b>           | <a href="#">NP_690852</a>   |
| <b>Locus ID:</b>         | 222229  |
| <b>UniProt ID:</b>       | <a href="#">Q9UFC0</a>  |
| <b>RefSeq Size:</b>      | 2220  |
| <b>Cytogenetics:</b>     | 7q22.1  |
| <b>RefSeq ORF:</b>       | 1941  |
| <b>Synonyms:</b>         | CENP-33; ORCA   |
| <b>Summary:</b>          | The protein encoded by this gene interacts with components of the origin recognition complex (ORC) and regulates the formation of the prereplicative complex. The encoded protein stabilizes the ORC and therefore aids in DNA replication. This protein is required for the G1/S phase transition of the cell cycle. In addition, the encoded protein binds to trimethylated histone H3 in heterochromatin and recruits the ORC and lysine methyltransferases, which help maintain the repressive heterochromatic state. Two transcript variants encoding different isoforms have been found for this gene. [provided by RefSeq, Dec 2015] |
| <b>Protein Families:</b> | Druggable Genome  |

## Product images:



Coomassie blue staining of purified LRWD1 protein (Cat# [TP307141]). The protein was produced from HEK293T cells transfected with LRWD1 cDNA clone (Cat# [RC207141]) using MegaTran 2.0 (Cat# [TT210002]).