

Product datasheet for TP307129M

TCP11L2 (NM_152772) Human Recombinant Protein

Product data:

Product Type:	Recombinant Proteins
Description:	Recombinant protein of human t-complex 11 (mouse)-like 2 (TCP11L2), 100 µg
Species:	Human
Expression Host:	HEK293T
Expression cDNA Clone or AA Sequence:	>RC207129 protein sequence Red=Cloning site Green=Tags(s)

MPFNGEKQCVGEDQPSDSDSSRFSESMASLSDYECRQSFASDSSSKSSSPASTSPPRVWTFDEVMATAR
NLSNLTLAHEIAVNENFQLKQEALPEKSLAGRVKHIVHQAFWDVLDSELNADPPEFEHAIKLFEEIREIL
LSFLTPGGNRLRNQICEVLDTDLIRQQAESAVDIQGLANYVISTMGKLCAPVRDNDIRELKATGNIVEV
LRQIFHVLDLMQMDMANFTIMSLRPHLQRQLVEYERTKFQEILEETPSALDQTTEWIKESVNEELFSLSE
SALTPGAENTSKPSLSPTLVLNNSYLKLLQWDYQKKELPETLMTDGARLQELTEKLNQLKIIACLSLITN
NMVGAITGGLPELASRLTRISAVLLEGMNKETFNLKEVLNSIGIQTCEVNKTLMERGLPTLNAEIQANL
IGQFSSIEEDNPIWSLIDKRIKLYMRLLCLPSPQKCMPPMPGGLAVIQQEALGSQYANIVNLNKQV
YGPFIYANILRKLFFNEEAMGKVDASPPTN

TRTRPLEQKLISEEDLAANDILDYKDDDDKV

Tag:	C-Myc/DDK
Predicted MW:	57.9 kDa
Concentration:	>0.05 µg/µL as determined by microplate BCA method
Purity:	> 80% as determined by SDS-PAGE and Coomassie blue staining
Buffer:	25 mM Tris-HCl, 100 mM glycine, pH 7.3, 10% glycerol
Preparation:	Recombinant protein was captured through anti-DDK affinity column followed by conventional chromatography steps.
Note:	For testing in cell culture applications, please filter before use. Note that you may experience some loss of protein during the filtration process.
Storage:	Store at -80°C.
Stability:	Stable for 12 months from the date of receipt of the product under proper storage and handling conditions. Avoid repeated freeze-thaw cycles.



[View online »](#)

RefSeq: [NP_689985](#)

Locus ID: 255394

UniProt ID: [Q8N4U5](#), [A0A024RBH4](#)

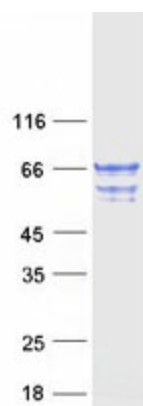
RefSeq Size: 2255

Cytogenetics: 12q23.3

RefSeq ORF: 1557

Protein Families: Druggable Genome

Product images:



Coomassie blue staining of purified TCP11L2 protein (Cat# [TP307129]). The protein was produced from HEK293T cells transfected with TCP11L2 cDNA clone (Cat# [RC207129]) using MegaTran 2.0 (Cat# [TT210002]).