

Product datasheet for **TP307129L**

TCP11L2 (NM_152772) Human Recombinant Protein

Product data:

Product Type: Recombinant Proteins

Description: Recombinant protein of human t-complex 11 (mouse)-like 2 (TCP11L2), 1 mg

Species: Human

Expression Host: HEK293T

Expression cDNA Clone or AA Sequence: >RC207129 protein sequence
Red=Cloning site **Green**=Tags(s)

MPFNGEKQCVGEDQPSDSDSSRFSESMASLSDYECRQSFASDSSSKSSSPASTSPPRVWTFDEVMATAR
NLSNLTLAHEIAVNENFQLKQEALPEKSLAGRVKHIVHQAFWDVLDSELNADPPEFEHAIKLFEEIREIL
LSFLTPGGNRLRNQICEVLDTDLIRQQAESAVDIQGLANYVISTMGKLCAPVRDNDIRELKATGNIVEV
LRQIFHVLDLMQMDMANFTIMSLRPHLQRQLVEYERTKFQEILEETPSALDQTTEWIKESVNEELFSLSE
SALTPGAENTSKPSLSPTLVLNNSYLKLLQWDYQKKELPETLMTDGARLQELTEKLNQLKIIACLSLITN
NMVGAITGGLPELASRLTRISAVLLEGMNKETFNLKEVLNSIGIQTCVEVNKTLMERGLPTLNAEIQANL
IGQFSSIEEDNPIWSLIDKRIKLYMRLLCLPSPQKCMPPMPGGLAVIQQEALGSQYANIVNLNKQV
YGPFYANILRKLFFNEEAMGKVDASPPTN

TRTRPLEQKLISEEDLAANDILDYKDDDDKV

Tag: C-Myc/DDK

Predicted MW: 57.9 kDa

Concentration: >0.05 µg/µL as determined by microplate BCA method

Purity: > 80% as determined by SDS-PAGE and Coomassie blue staining

Buffer: 25 mM Tris-HCl, 100 mM glycine, pH 7.3, 10% glycerol

Preparation: Recombinant protein was captured through anti-DDK affinity column followed by conventional chromatography steps.

Note: For testing in cell culture applications, please filter before use. Note that you may experience some loss of protein during the filtration process.

Storage: Store at -80°C.

Stability: Stable for 12 months from the date of receipt of the product under proper storage and handling conditions. Avoid repeated freeze-thaw cycles.



[View online >](#)

RefSeq: [NP_689985](#)

Locus ID: 255394

UniProt ID: [Q8N4U5](#), [A0A024RBH4](#)

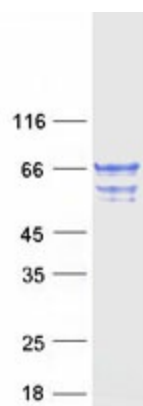
RefSeq Size: 2255

Cytogenetics: 12q23.3

RefSeq ORF: 1557

Protein Families: Druggable Genome

Product images:



Coomassie blue staining of purified TCP11L2 protein (Cat# [TP307129]). The protein was produced from HEK293T cells transfected with TCP11L2 cDNA clone (Cat# [RC207129]) using MegaTran 2.0 (Cat# [TT210002]).