

Product datasheet for TP307118

IMPDH1 (NM_183243) Human Recombinant Protein

Product data:

Product Type:	Recombinant Proteins
Description:	Recombinant protein of human IMP (inosine monophosphate) dehydrogenase 1 (IMPDH1), transcript variant 2, 20 µg
Species:	Human
Expression Host:	HEK293T
Expression cDNA Clone or AA Sequence:	>RC207118 protein sequence Red=Cloning site Green=Tags(s)

MEGPLTPPPLQGGGAAVPEPGARQHPGHETAAQRY SARLLQAGYEPESMADYLISGGTGYVPEDGLTAQ
QLFASADGLTYNDFLILPGFIDFIADEVDLTSALTRKITLKTPLISSPMDTVTEADMAIAMALMGGIGFI
HHNCTPEFQANEVRKVKKFEQGFITDPVVLSPSHTVGDVLEAKMRHGFSGIPITETGTMGSKLVGIVTSR
DIDFLAEKDHTLLSEVMTPRIELVWAPAGVTLKEANEILQRSKKGKLPVNDCELVAIARTDLKKNR
DYPLASKDSQKQLLCGAAVGTREDDKYRLDLLTQAGVDVIVLDSSQGNSVYQIAMVHYIKQKYPHLQVIG
GNVVTAAQAKNLIDAGVDGLRVGMGCGSICITQEVMACGRPQGTAVYKVAEYARRFGVPIIADGGIQTVG
HVVKALALGASTVMMGSLAATTEAPGEYFFSDGVRLKKYRGMGSLDAMEKSSSSQKRYFSEGDKVKIAQ
GVSGSIQDKGSIQKFPYLIAGIQHGCQDIGARSLSVLRSMMYSGELKFEKRTMSAQIEGGVHGLHSYEK
RLY

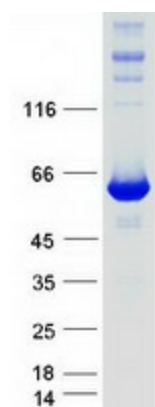
TRTRPLEQKLISEEDLAANDILDYKDDDDKV

Tag:	C-Myc/DDK
Predicted MW:	60.3 kDa
Concentration:	>0.05 µg/µL as determined by microplate BCA method
Purity:	> 80% as determined by SDS-PAGE and Coomassie blue staining
Buffer:	25 mM Tris-HCl, 100 mM glycine, pH 7.3, 10% glycerol
Preparation:	Recombinant protein was captured through anti-DDK affinity column followed by conventional chromatography steps.
Note:	For testing in cell culture applications, please filter before use. Note that you may experience some loss of protein during the filtration process.
Storage:	Store at -80°C.



[View online »](#)

Stability:	Stable for 12 months from the date of receipt of the product under proper storage and handling conditions. Avoid repeated freeze-thaw cycles.
RefSeq:	NP_899066
Locus ID:	3614
UniProt ID:	P20839
RefSeq Size:	2517
Cytogenetics:	7q32.1
RefSeq ORF:	1689
Synonyms:	IMPD; IMPD1; IMPDH-I; LCA11; RP10; sWSS2608
Summary:	The protein encoded by this gene acts as a homotetramer to regulate cell growth. The encoded protein is an enzyme that catalyzes the synthesis of xanthine monophosphate (XMP) from inosine-5'-monophosphate (IMP). This is the rate-limiting step in the de novo synthesis of guanine nucleotides. Defects in this gene are a cause of retinitis pigmentosa type 10 (RP10). Several transcript variants encoding different isoforms have been found for this gene. [provided by RefSeq, Dec 2008]
Protein Families:	Druggable Genome
Protein Pathways:	Drug metabolism - other enzymes, Metabolic pathways, Purine metabolism

Product images:

Coomassie blue staining of purified IMPDH1 protein (Cat# TP307118). The protein was produced from HEK293T cells transfected with IMPDH1 cDNA clone (Cat# [RC207118]) using MegaTran 2.0 (Cat# [TT210002]).