

## Product datasheet for TP307115

### MEK3 (MAP2K3) (NM\_145109) Human Recombinant Protein

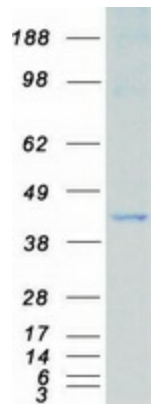
#### Product data:

|                                       |  |
|---------------------------------------|--|
| Product Type:                         | Recombinant Proteins   |
| Description:                          | Recombinant protein of human mitogen-activated protein kinase kinase 3 (MAP2K3), transcript variant B, 20 µg   |
| Species:                              | Human  |
| Expression Host:                      | HEK293T  |
| Expression cDNA Clone or AA Sequence: | >RC207115 protein sequence<br><span style="color: red;">Red</span> =Cloning site <span style="color: green;">Green</span> =Tags(s)<br><br>MESPASSQPASMPQSKGKSKRKKDLRISCMSPAPNPPTPPRNLDSTFTITIGDRNFEVEADDLVTISEL<br>GRGAYGVVEKVRHAQSGTIMAVKRIRATVNSQEQKRLMDLDINMRTVDCFYTVTFYGALFREGDVWICM<br>ELMDTSLDKFYRKVLNMTIPEDILGEIAVSIVRALEHLHSLSVIHRDVKPSNVLINKEGHVKMCDFG<br>ISGYLVDVAKTMDAGCKPYMAPERINPELNQKGYNVKSDVWSLGITMIEMAILRFPYESWGTPFQQLKQ<br>VVEEPPQLPADRFSPFVDFTAQCLRKNPAERMSYLELMEHPFFTLHKTKTDIAAFVKEILGEDS<br><br><span style="color: red;">TR</span> <span style="color: green;">TRPLEQKLISEEDLAANDILDYKDDDDKV</span> |
| Tag:                                  | C-Myc/DDK  |
| Predicted MW:                         | 39.1 kDa   |
| Concentration:                        | >0.05 µg/µL as determined by microplate BCA method   |
| Purity:                               | > 80% as determined by SDS-PAGE and Coomassie blue staining  |
| Buffer:                               | 25 mM Tris-HCl, 100 mM glycine, pH 7.3, 10% glycerol   |
| Preparation:                          | Recombinant protein was captured through anti-DDK affinity column followed by conventional chromatography steps.   |
| Note:                                 | For testing in cell culture applications, please filter before use. Note that you may experience some loss of protein during the filtration process.   |
| Storage:                              | Store at -80°C.  |
| Stability:                            | Stable for 12 months from the date of receipt of the product under proper storage and handling conditions. Avoid repeated freeze-thaw cycles.  |
| RefSeq:                               | <u><a href="#">NP_659731</a></u>   |
| Locus ID:                             | 5606   |


[View online »](#)

|                   |  |
|-------------------|--|
| UniProt ID:       | <a href="#">P46734</a>   |
| RefSeq Size:      | 2319   |
| Cytogenetics:     | 17p11.2  |
| RefSeq ORF:       | 1041   |
| Synonyms:         | MAPKK3; MEK3; MKK3; PRKMK3; SAPKK-2; SAPKK2  |
| Summary:          | The protein encoded by this gene is a dual specificity protein kinase that belongs to the MAP kinase kinase family. This kinase is activated by mitogenic and environmental stress, and participates in the MAP kinase-mediated signaling cascade. It phosphorylates and thus activates MAPK14/p38-MAPK. This kinase can be activated by insulin, and is necessary for the expression of glucose transporter. Expression of RAS oncogene is found to result in the accumulation of the active form of this kinase, which thus leads to the constitutive activation of MAPK14, and confers oncogenic transformation of primary cells. The inhibition of this kinase is involved in the pathogenesis of Yersinia pseudotuberculosis. Multiple alternatively spliced transcript variants that encode distinct isoforms have been reported for this gene. [provided by RefSeq, Jul 2008] |
| Protein Families: | Druggable Genome, Protein Kinase, Transcription Factors  |
| Protein Pathways: | Amyotrophic lateral sclerosis (ALS), Fc epsilon RI signaling pathway, GnRH signaling pathway, MAPK signaling pathway, Toll-like receptor signaling pathway   |

### Product images:



Coomassie blue staining of purified MAP2K3 protein (Cat# TP307115). The protein was produced from HEK293T cells transfected with MAP2K3 cDNA clone (Cat# [RC207115]) using MegaTran 2.0 (Cat# [TT210002]).