

Product datasheet for **TP307109M**

CSRP1 (NM_004078) Human Recombinant Protein

Product data:

Product Type:	Recombinant Proteins
Description:	Recombinant protein of human cysteine and glycine-rich protein 1 (CSRP1), transcript variant 1, 100 µg
Species:	Human
Expression Host:	HEK293T
Expression cDNA Clone or AA Sequence:	>RC207109 protein sequence Red =Cloning site Green =Tags(s)

MPNWGGGKKCGVCQKTVYFAEEVQCEGNSFHKSCFLCMVCKKNLDSTTVAVHGEEIYCKSCYGGKKGPKG
YGYGQGAGTLSTDKGESLGIKHEEAPGHRPTTNPASKFAQKIGGSERCPRCSQAVYAAEKVIGAGKSWH
KACFRCAKCGKGLESTTLADKDG EYCKG CYAKNFGPKGFGFGGAGALVHSE

TRTRPLEQKLISEEDLAANDILDYKDDDDKV

Tag:	C-Myc/DDK
Predicted MW:	20.4 kDa
Concentration:	>0.05 µg/µL as determined by microplate BCA method
Purity:	> 80% as determined by SDS-PAGE and Coomassie blue staining
Buffer:	25 mM Tris-HCl, 100 mM glycine, pH 7.3, 10% glycerol
Preparation:	Recombinant protein was captured through anti-DDK affinity column followed by conventional chromatography steps.
Note:	For testing in cell culture applications, please filter before use. Note that you may experience some loss of protein during the filtration process.
Storage:	Store at -80°C.
Stability:	Stable for 12 months from the date of receipt of the product under proper storage and handling conditions. Avoid repeated freeze-thaw cycles.
RefSeq:	NP_004069
Locus ID:	1465
UniProt ID:	P21291 , A0A384P5K2



[View online »](#)

RefSeq Size: 1970

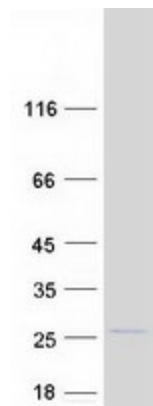
Cytogenetics: 1q32.1

RefSeq ORF: 579

Synonyms: CRP; CRP1; CSRP; CYRP; D1S181E; HEL-141; HEL-S-286

Summary: This gene encodes a member of the cysteine-rich protein (CSRP) family. This gene family includes a group of LIM domain proteins, which may be involved in regulatory processes important for development and cellular differentiation. The LIM/double zinc-finger motif found in this gene product occurs in proteins with critical functions in gene regulation, cell growth, and somatic differentiation. Alternatively spliced transcript variants have been described. [provided by RefSeq, Aug 2010]

Product images:



Coomassie blue staining of purified CSRP1 protein (Cat# [TP307109]). The protein was produced from HEK293T cells transfected with CSRP1 cDNA clone (Cat# [RC207109]) using MegaTran 2.0 (Cat# [TT210002]).