

Product datasheet for **TP307099L**

Epsin 1 (EPN1) (NM_013333) Human Recombinant Protein

Product data:

Product Type:	Recombinant Proteins
Description:	Recombinant protein of human epsin 1 (EPN1), transcript variant 3, 1 mg
Species:	Human
Expression Host:	HEK293T
Expression cDNA Clone or AA Sequence:	>RC207099 representing NM_013333 Red =Cloning site Green =Tags(s) MSTSSLRQMKNIHVHNYSEAEIKVREATSNDPWGPSSSLMSEIADLTYNVWAFSEIMSMIWKRLNDHGKN WRHVYKAMTLMELYIKTGSERVSQCKENMYAVQTLKDFQYVDRDGDQGVNVREKAKQLVALLRDEDRL REERAHALKTKEKLAQTATASSAAVGSPPPEAEQAWPQSSGEEELQLQLALAMSKEEADQEERIRRGDD LRLQMAIEESKRETGGKESSLMDLADVFTAPAPAPTTDPWGGPAPMAAAVPTAAPTSDPWGGPPVPPAA DPWGGPAPTPASGDPWRPAAPAGPSVDPWGGTPAPAAGEGPTDPWSSDGGVPVSGPSASDPWTPAPAF SDPWGGSPAKPSTNGTTAGGFDTEPDEFSDFDRLRTALPTSGSSAGELELLAGEVPARSPGAFDMSGVRG SLAEAVGSPPPAATPTPTPTRKTPESFLGPNAAALVDLSLVSRRGPTPPGAKASNPFLPGGGPATGPSV TNPFPQAPPATLTLNQLRLSPVPPVPGAPPTYISPLGGGGLPMMPPGPPAPNTNPFL TRTRPLEQKLISEEDLAANDILDYKDDDDKV
Tag:	C-Myc/DDK
Predicted MW:	57.3 kDa
Concentration:	>0.05 µg/µL as determined by microplate BCA method
Purity:	> 80% as determined by SDS-PAGE and Coomassie blue staining
Buffer:	25 mM Tris-HCl, 100 mM glycine, pH 7.3, 10% glycerol
Preparation:	Recombinant protein was captured through anti-DDK affinity column followed by conventional chromatography steps.
Note:	For testing in cell culture applications, please filter before use. Note that you may experience some loss of protein during the filtration process.
Storage:	Store at -80°C.
Stability:	Stable for 12 months from the date of receipt of the product under proper storage and handling conditions. Avoid repeated freeze-thaw cycles.



[View online »](#)

RefSeq: [NP_037465](#)

Locus ID: 29924

UniProt ID: [Q9Y6I3](#)

RefSeq Size: 2430

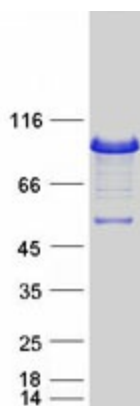
Cytogenetics: 19q13.42

RefSeq ORF: 1650

Summary: This gene encodes a member of the epsin protein family. The encoded protein binds clathrin and is involved in the endocytosis of clathrin-coated vesicles. Loss of function of this gene is associated with reduced tumor growth and progression in certain cancer types. [provided by RefSeq, Mar 2016]

Protein Pathways: Endocytosis

Product images:



Coomassie blue staining of purified EPN1 protein (Cat# [TP307099]). The protein was produced from HEK293T cells transfected with EPN1 cDNA clone (Cat# [RC207099]) using MegaTran 2.0 (Cat# [TT210002]).