

Product datasheet for TP307097M

MCM6 (NM_005915) Human Recombinant Protein

Product data:

Product Type:	Recombinant Proteins
Description:	Recombinant protein of human minichromosome maintenance complex component 6 (MCM6), 100 µg
Species:	Human
Expression Host:	HEK293T
Expression cDNA Clone or AA Sequence:	>RC207097 protein sequence Red=Cloning site Green=Tags(s)

MDLAAAEPGAGSQHLEVRDEVAEKQCQLFLDFLEEFQSSDGEIKYLQLAEELIRPERNTLWVSFVDLEQ
FNQQLSTTIQEEFYRVYPYLCRALKTFVKDRKEIPLAKDFYVAFQDLPTRHKIRELTSSRIGLLTRISGQ
WRTHPVHPELVSGTFLCLDCQTVIRDVEQQFKYTQPNICRNPVCANRRRFLDNTKSRFVDFQKVRIQE
TQAEIPRGSIPRSLEVILRAEAVESAQAGDKCDFGTGLIWPDPVSKLSTPGARAETNSRVSGVDGYETEG
IRGLRALGVRDLSYRLVFLACCVAPTNPFRGGKELRDEEQTAESIKNQMTVKEWEKVFEMSQDKNLYHNL
CTSLFPTIHGNDEVKRGVLLMLFGGVPKTTGEGTSLRGDINVCIVGDPSTAKSQFLKHVEEFSPRAVYTS
GKASSAAGLTAAVRDEESHEFVIEAGALMLADNGVCCIDEFDKMDVRDQVAIHEAMEQQTISITKAGVK
ATLNARTSILAAANPISGHYDRSKSLKQINILSAPIMSRFDLFFILVDECNEVTDYAIARRIVDLHSRIE
ESIDRVYSLDDIRRYLLFARQFKPKISKESEDFIVEQYKHLRQRDGSVTKSSWRITVRQLES MIRLSEA
MARMHCCDEVQPKHVKEAFRLNKSIIRVETPDVNLDQEEIQMEVDEGAGGINGHADSPAPVNGINGYN
EDINQESAPKASRLGFSEYCRISNLIVLHLRKVEEEEDSALKRSELVNWYLKEIESEIDSEEELINKK
RIIEKVIHRLTHYDHVLIELTQAGLKGSTEGSESYEEDPYLVVNPNYLLED

TRTRPLEQKLISEEDLAANDILDYKDDDDKV

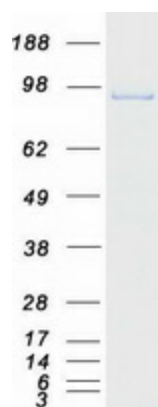
Tag:	C-Myc/DDK
Predicted MW:	92.7 kDa
Concentration:	>0.05 µg/µL as determined by microplate BCA method
Purity:	> 80% as determined by SDS-PAGE and Coomassie blue staining
Buffer:	25 mM Tris-HCl, 100 mM glycine, pH 7.3, 10% glycerol
Preparation:	Recombinant protein was captured through anti-DDK affinity column followed by conventional chromatography steps.



[View online »](#)

Note:	For testing in cell culture applications, please filter before use. Note that you may experience some loss of protein during the filtration process.
Storage:	Store at -80°C.
Stability:	Stable for 12 months from the date of receipt of the product under proper storage and handling conditions. Avoid repeated freeze-thaw cycles.
RefSeq:	NP_005906
Locus ID:	4175
UniProt ID:	Q14566
RefSeq Size:	3791
Cytogenetics:	2q21.3
RefSeq ORF:	2463
Synonyms:	MCG40308; Mis5; P105MCM
Summary:	The protein encoded by this gene is one of the highly conserved mini-chromosome maintenance proteins (MCM) that are essential for the initiation of eukaryotic genome replication. The hexameric protein complex formed by the MCM proteins is a key component of the pre-replication complex (pre_RC) and may be involved in the formation of replication forks and in the recruitment of other DNA replication related proteins. The MCM complex consisting of this protein and MCM2, 4 and 7 proteins possesses DNA helicase activity, and may act as a DNA unwinding enzyme. The phosphorylation of the complex by CDC2 kinase reduces the helicase activity, suggesting a role in the regulation of DNA replication. Single nucleotide polymorphisms in the intron regions of this gene are associated with differential transcriptional activation of the promoter of the neighboring lactase gene and, thereby, influence lactose intolerance in early adulthood. [provided by RefSeq, May 2012]
Protein Families:	Stem cell - Pluripotency, Transcription Factors
Protein Pathways:	Cell cycle, DNA replication

Product images:



Coomassie blue staining of purified MCM6 protein (Cat# [TP307097]). The protein was produced from HEK293T cells transfected with MCM6 cDNA clone (Cat# [RC207097]) using MegaTran 2.0 (Cat# [TT210002]).