

## Product datasheet for **TP307088**

### LMAN1 (NM\_005570) Human Recombinant Protein

#### Product data:

Product Type:	Recombinant Proteins
Description:	Recombinant protein of human lectin, mannose-binding, 1 (LMAN1), 20 µg
Species:	Human
Expression Host:	HEK293T
Expression cDNA Clone or AA Sequence:	>RC207088 protein sequence <b>Red</b> =Cloning site <b>Green</b> =Tags(s)
	<p>MAGSRQRGLRARVRPLFCALLLSLGRFVRGDGVGGDPAVALPHRRFEYKYSFKGPHLVQSDGTVPFWAHA GNAIPSSDQIRVAPSLKSQRGSVWTKTKAAFENWEVEVTFRVTGRGRIGADGLAIWYAENQGLEGPVFGS ADLWNGVGIFFDSDNDGKKNPAIVIIGNNGQIHVDHQNDGASQALASCQRDFRNKPYVRAKITYYQN TLTVMINNGFTPDKNDYEFCAKVENMIIPAQGHFGISAATGGLADDHDVLSFLTFLTEPGKEPPTPDKE ISEKEKEYQEFEHFQQELDKKKEEFQKGHPDLQGGQPAEEIFESVGDRELRLQVFEGQNRIHLEIKQLNR QLDMILDEQRRYVSSLTEEISKRGAGMPGQHGQITQQELDTVKTQHEILRQVNMKNSLSETVRLVSGM QHPGSAGGVYETTQHFIDIKEHLHIVKRDIDNLVQRNMPKSNEPKPELPPFSPCLSTVHFIFVWVQTV LFIGYIMYRSQQEAAAKKFF</p> <p><b>TRTRPLEQKLISEEDLAANDILDYKDDDDKV</b></p>
Tag:	C-Myc/DDK
Predicted MW:	54.2 kDa
Concentration:	>0.05 µg/µL as determined by microplate BCA method
Purity:	> 80% as determined by SDS-PAGE and Coomassie blue staining
Buffer:	25 mM Tris-HCl, 100 mM glycine, pH 7.3, 10% glycerol
Preparation:	Recombinant protein was captured through anti-DDK affinity column followed by conventional chromatography steps.
Note:	For testing in cell culture applications, please filter before use. Note that you may experience some loss of protein during the filtration process.
Storage:	Store at -80°C.
Stability:	Stable for 12 months from the date of receipt of the product under proper storage and handling conditions. Avoid repeated freeze-thaw cycles.



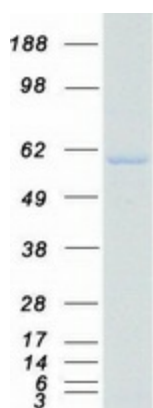
[View online >](#)

RefSeq:	<a href="#">NP_005561</a>
Locus ID:	3998
UniProt ID:	<a href="#">P49257</a> , <a href="#">A0A024R2A7</a>
RefSeq Size:	4848
Cytogenetics:	18q21.32
RefSeq ORF:	1530
Synonyms:	ERGIC-53; ERGIC53; F5F8D; FMFD1; gp58; MCFD1; MR60

**Summary:** The protein encoded by this gene is a membrane mannose-specific lectin that cycles between the endoplasmic reticulum, endoplasmic reticulum-Golgi intermediate compartment, and cis-Golgi, functioning as a cargo receptor for glycoprotein transport. The protein has an N-terminal signal sequence, a calcium-dependent and pH-sensitive carbohydrate recognition domain, a stalk region that functions in oligomerization, a transmembrane domain, and a short cytoplasmic domain required for organelle targeting. Allelic variants of this gene are associated with the autosomal recessive disorder combined factor V-factor VIII deficiency. [provided by RefSeq, Jul 2015]

**Protein Families:** Druggable Genome, Transmembrane

### Product images:



Coomassie blue staining of purified LMAN1 protein (Cat# TP307088). The protein was produced from HEK293T cells transfected with LMAN1 cDNA clone (Cat# [RC207088]) using MegaTran 2.0 (Cat# [TT210002]).