

## Product datasheet for **TP307083M**

### FLAD1 (NM\_201398) Human Recombinant Protein

#### Product data:

**Product Type:** Recombinant Proteins  
**Description:** Recombinant protein of human FAD1 flavin adenine dinucleotide synthetase homolog (*S. cerevisiae*) (FLAD1), transcript variant 2, 100 µg

**Species:** Human

**Expression Host:** HEK293T

**Expression cDNA Clone or AA Sequence:** >RC207083 protein sequence  
**Red**=Cloning site **Green**=Tags(s)

MTSRASELSPGRSVTAGIIIVGDEILKGHTQDTNTFFLCRTLRLSLGVQVCRVSWPDEVATIAAEVTSFS  
NRFTHVLTAGGIGPTHDDVTFEAVAQAFGDELKPHPKLEAATKALGGEGWEKLSLVPSSARLHYGTDPC  
GQPFRLVSVRNVYLFPGIPELLRRVLEGMKGLFQNPVAVQFHSKELYVADEASIAPIAEQAHFGR  
LGLGSYPDWGSNYYQVKLTLTDEEEGLEECLAYLTARLPQGSVLYMPNAVEQASEAVYKLAESGSSLG  
KKVAGALQTIETSLAQYSLTQLCVGFNGGKDCTALLHLFHAHVQRKLPDVPNPLQILYIRSISPFPELEQ  
FLQDTIKRYNLQMLEAEGSMKQALGELQARHPQLEAVLMGTRRTDPYSCSLCPFSPDTPGWPAFMRINPL  
LDWTYRDIWDFLRQLFVPYCYLYDRGYTSLGSRNTVVRNPALKCLSPGGHPTYPAYLLENEEEERNRST

**TRTRPLEQKLISEEDLAANDILDYKDDDDKV**

**Tag:** C-Myc/DDK

**Predicted MW:** 54 kDa

**Concentration:** >0.05 µg/µL as determined by microplate BCA method

**Purity:** > 80% as determined by SDS-PAGE and Coomassie blue staining

**Buffer:** 25 mM Tris-HCl, 100 mM glycine, pH 7.3, 10% glycerol

**Preparation:** Recombinant protein was captured through anti-DDK affinity column followed by conventional chromatography steps.

**Note:** For testing in cell culture applications, please filter before use. Note that you may experience some loss of protein during the filtration process.

**Storage:** Store at -80°C.

**Stability:** Stable for 12 months from the date of receipt of the product under proper storage and handling conditions. Avoid repeated freeze-thaw cycles.



[View online >](#)

RefSeq: [NP\\_958800](#)

Locus ID: 80308

UniProt ID: [Q8NFF5](#)

RefSeq Size: 1816

Cytogenetics: 1q21.3

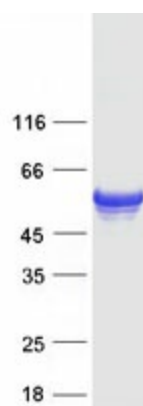
RefSeq ORF: 1470

Synonyms: FAD1; FADS; LSMFLAD; PP591

**Summary:** This gene encodes the enzyme that catalyzes adenylation of flavin mononucleotide (FMN) to form flavin adenine dinucleotide (FAD) coenzyme. Alternatively spliced transcript variants encoding distinct isoforms have been observed. [provided by RefSeq, Jul 2008]

**Protein Pathways:** Metabolic pathways, Riboflavin metabolism

### Product images:



Coomassie blue staining of purified FLAD1 protein (Cat# [TP307083]). The protein was produced from HEK293T cells transfected with FLAD1 cDNA clone (Cat# [RC207083]) using MegaTran 2.0 (Cat# [TT210002]).