

## Product datasheet for TP307075

### MRPS11 (NM\_022839) Human Recombinant Protein

#### Product data:

Product Type:	Recombinant Proteins
Description:	Recombinant protein of human mitochondrial ribosomal protein S11 (MRPS11), nuclear gene encoding mitochondrial protein, transcript variant 1, 20 µg
Species:	Human
Expression Host:	HEK293T
Expression cDNA Clone or AA Sequence:	>RC207075 protein sequence <b>Red</b> =Cloning site <b>Green</b> =Tags(s)
	<p>MQAVRNAGSRFLRSWTWPQTAGRWWARTPAGTICTGARQLQDAAAKQKVEQNAAPSHTKFSIYPPPIGEE SSLRWAGKKFEEIPIAHIKASHNNTQIQVVSASNEPLAFASCGTEGFRNAKKGTGIAAQTAGIAAARAK QKGVIIHRVVVKGLGPGRLSAMHGLIMGGLEVISITDNTPIPHNGCRPRKARKL</p> <p><b>TRTRPLEQKLISEEDLAANDILDYKDDDDKV</b></p>
Tag:	C-Myc/DDK
Predicted MW:	20.4 kDa
Concentration:	>0.05 µg/µL as determined by microplate BCA method
Purity:	> 80% as determined by SDS-PAGE and Coomassie blue staining
Buffer:	25 mM Tris-HCl, 100 mM glycine, pH 7.3, 10% glycerol
Preparation:	Recombinant protein was captured through anti-DDK affinity column followed by conventional chromatography steps.
Note:	For testing in cell culture applications, please filter before use. Note that you may experience some loss of protein during the filtration process.
Storage:	Store at -80°C.
Stability:	Stable for 12 months from the date of receipt of the product under proper storage and handling conditions. Avoid repeated freeze-thaw cycles.
RefSeq:	<a href="#">NP_073750</a>
Locus ID:	64963
UniProt ID:	<a href="#">P82912</a>



[View online »](#)

RefSeq Size: 1501

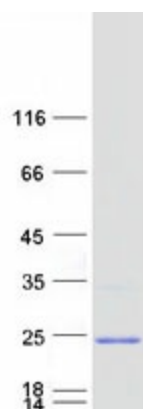
Cytogenetics: 15q25.3

RefSeq ORF: 582

Synonyms: HCC-2; MRP-S11; S11mt

**Summary:** Mammalian mitochondrial ribosomal proteins are encoded by nuclear genes and help in protein synthesis within the mitochondrion. Mitochondrial ribosomes (mitoribosomes) consist of a small 28S subunit and a large 39S subunit. They have an estimated 75% protein to rRNA composition compared to prokaryotic ribosomes, where this ratio is reversed. Another difference between mammalian mitoribosomes and prokaryotic ribosomes is that the latter contain a 5S rRNA. Among different species, the proteins comprising the mitoribosome differ greatly in sequence, and sometimes in biochemical properties, which prevents easy recognition by sequence homology. This gene encodes a 28S subunit protein that contains a high level of sequence similarity with ribosomal protein S11P family members. A pseudogene corresponding to this gene is found on chromosome 20. Multiple transcript variants encoding different isoforms have been found for this gene. [provided by RefSeq, Apr 2016]

### Product images:



Coomassie blue staining of purified MRPS11 protein (Cat# TP307075). The protein was produced from HEK293T cells transfected with MRPS11 cDNA clone (Cat# [RC207075]) using MegaTran 2.0 (Cat# [TT210002]).