

## Product datasheet for **TP307071L**

### **PDP2 (NM\_020786) Human Recombinant Protein**

#### **Product data:**

<b>Product Type:</b>	Recombinant Proteins
<b>Description:</b>	Recombinant protein of human pyruvate dehydrogenase phosphatase isoenzyme 2 (PDP2), 1 mg
<b>Species:</b>	Human
<b>Expression Host:</b>	HEK293T
<b>Expression cDNA Clone or AA Sequence:</b>	>RC207071 protein sequence <b>Red</b> =Cloning site <b>Green</b> =Tags(s)

MSSTVSYWILNSTRNSIATLQGGRRLYSRYVSNRNKCLKWRLFSRVPPTLNSSPCGGFTLCKAYRHTSTEE  
DDFHLQLSPEQINEVLRAGETTHKILDLESRVNSVLRFESNQLAANSPVEDRRGVASCLQTNGLMFGIF  
DGHGGHACAQAVSERLFYYVAVSLMSHQLEHMEGAMESMKPLLILHHLKHPGDSIYKDVTSVHLDHLR  
VYWQELLDLHMEMGLSIEEALMYSFQRLDSDISLEIQAPLEDEVTRNLSLQVAFSGATACMAHVDGIHLH  
VANAGDCRAILGVQEDNGMWSCPLTRDHNAWNQAELSRLKREHPESDRTIIMEDRLLGVLIPCRAFGD  
VQLKWSKELQRSILERGFNTEALNIYQFTPPHYTPPYLTAEPEVTYHRLRPQDKFLVLASDGLWDMLSN  
EDVVRLVVGHLAEADWHKTDLAQRPANLGLMQSLLLQRKASGLHEADQNAATRLIRHAIGNNEYGEMEA  
RLAAMLTLPEDLARMYRDDITVTVVYFNSESIGAYYKGG

**TRTRPLEQKLISEEDLAANDILDYKDDDDKV**

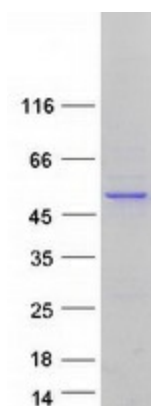
<b>Tag:</b>	C-Myc/DDK
<b>Predicted MW:</b>	59.8 kDa
<b>Concentration:</b>	>0.05 µg/µL as determined by microplate BCA method
<b>Purity:</b>	> 80% as determined by SDS-PAGE and Coomassie blue staining
<b>Buffer:</b>	25 mM Tris-HCl, 100 mM glycine, pH 7.3, 10% glycerol
<b>Preparation:</b>	Recombinant protein was captured through anti-DDK affinity column followed by conventional chromatography steps.
<b>Note:</b>	For testing in cell culture applications, please filter before use. Note that you may experience some loss of protein during the filtration process.
<b>Storage:</b>	Store at -80°C.



[View online »](#)

<b>Stability:</b>	Stable for 12 months from the date of receipt of the product under proper storage and handling conditions. Avoid repeated freeze-thaw cycles.
<b>RefSeq:</b>	<a href="#">NP_065837</a>
<b>Locus ID:</b>	57546
<b>UniProt ID:</b>	<a href="#">Q9P2I9</a>
<b>RefSeq Size:</b>	7042
<b>Cytogenetics:</b>	16q22.1
<b>RefSeq ORF:</b>	1587
<b>Synonyms:</b>	PDPC 2; PPM2B; PPM2C2
<b>Summary:</b>	This gene is a mitochondrial protein that functions as a phosphatase and is involved in the enzymatic resetting of the pyruvate dehydrogenase complex. Alternative splicing results in multiple transcript variants encoding the same protein. [provided by RefSeq, Aug 2016]
<b>Protein Families:</b>	Druggable Genome, Phosphatase

### Product images:



Coomassie blue staining of purified PDP2 protein (Cat# [TP307071]). The protein was produced from HEK293T cells transfected with PDP2 cDNA clone (Cat# [RC207071]) using MegaTran 2.0 (Cat# [TT210002]).