

Product datasheet for **TP307071**

PDP2 (NM_020786) Human Recombinant Protein

Product data:

Product Type:	Recombinant Proteins
Description:	Recombinant protein of human pyruvate dehydrogenase phosphatase isoenzyme 2 (PDP2), 20 µg
Species:	Human
Expression Host:	HEK293T
Expression cDNA Clone or AA Sequence:	>RC207071 protein sequence Red =Cloning site Green =Tags(s)

MSSTVSYWILNSTRNSIATLQGGRRLYSRYVSNRNKWKWRLFSRVPPTLNSSPCGGFTLCKAYRHTSTEE
DDFHLQLSPEQINEVLRAGETTHKILDLESRVNSVLRFESNQLAANSPVEDRRGVASCLQTNGLMFGIF
DGHGGHACAQAVSERLFYYVAVSLMSHQLEHMEGAMESMKPLLPIHLHWLKHGPGDSIYKDVTSVHLDHLR
VYWQELLDLHMEMGLSIEEALMYSFQRLDSDISLEIQAPLEDEVTRNLSLQVAFSGATACMAHVDGIHLH
VANAGDCRAILGVQEDNGMWSCPLTRDHNAWNQAELSRLKREHPESDRTIIMEDRLLGVLIPCRAFGD
VQLKWSKELQRSILERGFNTEALNIYQFTPPHYTPPYLTAEPEVTYHRLRPQDKFLVLASDGLWDMLSN
EDVVRLVVGHLAEADWHKTDLAQRPANLGLMQSLLLQRKASGLHEADQNAATRLIRHAIGNNEYGEMEA
RLAAMLTLPEDLARMYRDDITVTVVYFNSESIGAYYKGG

TRTRPLEQKLISEEDLAANDILDYKDDDDKV

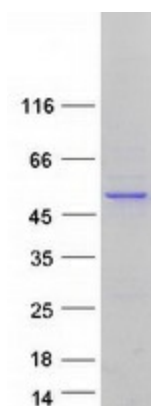
Tag:	C-Myc/DDK
Predicted MW:	59.8 kDa
Concentration:	>0.05 µg/µL as determined by microplate BCA method
Purity:	> 80% as determined by SDS-PAGE and Coomassie blue staining
Buffer:	25 mM Tris-HCl, 100 mM glycine, pH 7.3, 10% glycerol
Preparation:	Recombinant protein was captured through anti-DDK affinity column followed by conventional chromatography steps.
Note:	For testing in cell culture applications, please filter before use. Note that you may experience some loss of protein during the filtration process.
Storage:	Store at -80°C.



[View online »](#)

Stability:	Stable for 12 months from the date of receipt of the product under proper storage and handling conditions. Avoid repeated freeze-thaw cycles.
RefSeq:	NP_065837
Locus ID:	57546
UniProt ID:	Q9P2I9
RefSeq Size:	7042
Cytogenetics:	16q22.1
RefSeq ORF:	1587
Synonyms:	PDPC 2; PPM2B; PPM2C2
Summary:	This gene is a mitochondrial protein that functions as a phosphatase and is involved in the enzymatic resetting of the pyruvate dehydrogenase complex. Alternative splicing results in multiple transcript variants encoding the same protein. [provided by RefSeq, Aug 2016]
Protein Families:	Druggable Genome, Phosphatase

Product images:



Coomassie blue staining of purified PDP2 protein (Cat# TP307071). The protein was produced from HEK293T cells transfected with PDP2 cDNA clone (Cat# [RC207071]) using MegaTran 2.0 (Cat# [TT210002]).