

Product datasheet for **TP307053L**

Galanin (GAL) (NM_015973) Human Recombinant Protein

Product data:

Product Type:	Recombinant Proteins
Description:	Recombinant protein of human galanin prepropeptide (GAL), 1 mg
Species:	Human
Expression Host:	HEK293T
Expression cDNA Clone or AA Sequence:	>RC207053 protein sequence Red =Cloning site Green =Tags(s)
	MARGSALLLASLLAAALSASAGLWSPAKEKRGWTLNSAGYLLGPHAVGNHRFSFDKNGLTSKRELRPED DMKPGSFDRSIPENNIMRTIIEFLSFLHLKEAGALDRLLDLPAASSEDIERS
	TRTRPLEQKLISEEDLAANDILDYKDDDDKV
Tag:	C-Myc/DDK
Predicted MW:	13.1 kDa
Concentration:	>0.05 µg/µL as determined by microplate BCA method
Purity:	> 80% as determined by SDS-PAGE and Coomassie blue staining
Buffer:	25 mM Tris-HCl, 100 mM glycine, pH 7.3, 10% glycerol
Preparation:	Recombinant protein was captured through anti-DDK affinity column followed by conventional chromatography steps.
Note:	For testing in cell culture applications, please filter before use. Note that you may experience some loss of protein during the filtration process.
Storage:	Store at -80°C.
Stability:	Stable for 12 months from the date of receipt of the product under proper storage and handling conditions. Avoid repeated freeze-thaw cycles.
RefSeq:	NP_057057
Locus ID:	51083
UniProt ID:	P22466
RefSeq Size:	778
Cytogenetics:	11q13.2



[View online »](#)

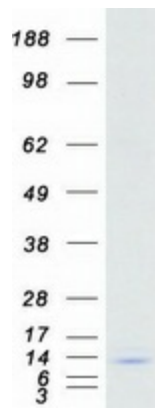
RefSeq ORF: 369

Synonyms: ETL8; GAL-GMAP; GALN; GLNN; GMAP

Summary: This gene encodes a neuroendocrine peptide that is widely expressed in the central and peripheral nervous systems and also the gastrointestinal tract, pancreas, adrenal gland and urogenital tract. The encoded protein is a precursor that is proteolytically processed to generate two mature peptides: galanin and galanin message-associated peptide (GMAP). Galanin has diverse physiological functions including nociception, feeding and energy homeostasis, osmotic regulation and water balance. GMAP has been demonstrated to possess antifungal activity and hypothesized to be part of the innate immune system. [provided by RefSeq, Jul 2015]

Protein Families: Secreted Protein, Transmembrane

Product images:



Coomassie blue staining of purified GAL protein (Cat# [TP307053]). The protein was produced from HEK293T cells transfected with GAL cDNA clone (Cat# [RC207053]) using MegaTran 2.0 (Cat# [TT210002]).