

Product datasheet for **TP307050**

METTL27 (NM_152559) Human Recombinant Protein

Product data:

Product Type:	Recombinant Proteins
Description:	Recombinant protein of human Williams Beuren syndrome chromosome region 27 (WBSCR27), 20 µg
Species:	Human
Expression Host:	HEK293T
Expression cDNA Clone or AA Sequence:	>RC207050 protein sequence Red =Cloning site Green =Tags(s)

MAQEEGGSLEPEVRARVRAAHGIPDLAQLHFYDRWAPDYDQDVATLLYRAPRLAVDCLTQALPGPPHSAL
ILDVACGTGLVAAELRAPGFLQLHGVDGSPGMLEQARAPGLYQRLSLCTLGQEPLPSPEGTFDAVLVGA
LSDGQVPCNAIPELVTKPGGLVCLTTRTNWSNLQYKEALEATLDRLEQAGMWEGLVAVPVDRLWTAGSW
LPPSWWWYPASLPRMASSPALSTCTESGRRPRLRK

TRTRPLEQKLISEEDLAANDILDYKDDDDKV

Tag:	C-Myc/DDK
Predicted MW:	26.3 kDa
Concentration:	>0.05 µg/µL as determined by microplate BCA method
Purity:	> 80% as determined by SDS-PAGE and Coomassie blue staining
Buffer:	25 mM Tris-HCl, 100 mM glycine, pH 7.3, 10% glycerol
Preparation:	Recombinant protein was captured through anti-DDK affinity column followed by conventional chromatography steps.
Note:	For testing in cell culture applications, please filter before use. Note that you may experience some loss of protein during the filtration process.
Storage:	Store at -80°C.
Stability:	Stable for 12 months from the date of receipt of the product under proper storage and handling conditions. Avoid repeated freeze-thaw cycles.
RefSeq:	<u>NP_689772</u>
Locus ID:	155368



[View online »](#)

UniProt ID: [Q8N6F8](#)

RefSeq Size: 958

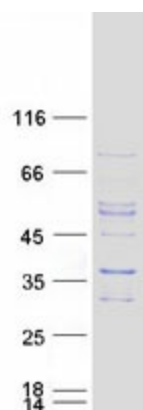
Cytogenetics: 7q11.23

RefSeq ORF: 735

Synonyms: WBSCR27

Summary: This gene encodes a protein belonging to ubiE/COQ5 methyltransferase family. The gene is deleted in Williams syndrome, a multisystem developmental disorder caused by the deletion of contiguous genes at 7q11.22-q11.23. [provided by RefSeq, Jul 2008]

Product images:



Coomassie blue staining of purified METTL27 protein (Cat# TP307050). The protein was produced from HEK293T cells transfected with METTL27 cDNA clone (Cat# [RC207050]) using MegaTran 2.0 (Cat# [TT210002]).