

Product datasheet for TP307037L

Alpha SNAP (NAPA) (NM_003827) Human Recombinant Protein

Product data:

Product Type:	Recombinant Proteins
Description:	Recombinant protein of human N-ethylmaleimide-sensitive factor attachment protein, alpha (NAPA), 1 mg
Species:	Human
Expression Host:	HEK293T
Expression cDNA Clone or AA Sequence:	>RC207037 protein sequence Red=Cloning site Green=Tags(s)

MDNSGKEAEAMALLAEAERKVKNSQSFFSGLFGGSSKIEEACEIYARAANMFKMAKNWSAAGNAFCQAAQ
LHLQLQSKHDAATCFVDAGNAFKKADPQEA INCLMRAIEIY TDMGRFTIAAKHHISIAE IYETELVDIEK
AIAHYEQSADYYKGEESNSSANKCLLKVAGYAALLEQYQKAI DIYEQVGTNAMDSPLLKYS AKDYFFKAA
LCHF CIDMLNAKLAVQKYEELFP AFSDSRECKLMKKLLEAHEEQNVDSYTESVKEYDSISR LDQWLTTML
LRIK KTIQGDEEDLR

SGPTRTRPLEQKLISEEDLAANDILDYKDDDDKV

Tag:	C-Myc/DDK
Predicted MW:	33.1 kDa
Concentration:	>0.05 µg/µL as determined by microplate BCA method
Purity:	> 80% as determined by SDS-PAGE and Coomassie blue staining
Buffer:	25 mM Tris-HCl, 100 mM glycine, pH 7.3, 10% glycerol
Preparation:	Recombinant protein was captured through anti-DDK affinity column followed by conventional chromatography steps.
Note:	For testing in cell culture applications, please filter before use. Note that you may experience some loss of protein during the filtration process.
Storage:	Store at -80°C.
Stability:	Stable for 12 months from the date of receipt of the product under proper storage and handling conditions. Avoid repeated freeze-thaw cycles.
RefSeq:	NP_003818
Locus ID:	8775

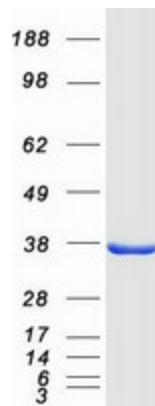


[View online »](#)

UniProt ID: [P54920](#), [A0A024R0R9](#)
RefSeq Size: 1865
Cytogenetics: 19q13.32-q13.33
RefSeq ORF: 885
Synonyms: SNAPA

Summary: This gene encodes a member of the soluble NSF attachment protein (SNAP) family. SNAP proteins play a critical role in the docking and fusion of vesicles to target membranes as part of the 20S NSF-SNAP-SNARE complex. The encoded protein plays a role in the completion of membrane fusion by mediating the interaction of N-ethylmaleimide-sensitive factor (NSF) with the vesicle-associated and membrane-associated SNAP receptor (SNARE) complex, and stimulating the ATPase activity of NSF. Alternatively spliced transcript variants have been observed for this gene. [provided by RefSeq, Jun 2011]

Product images:



Coomassie blue staining of purified NAPA protein (Cat# [TP307037]). The protein was produced from HEK293T cells transfected with NAPA cDNA clone (Cat# [RC207037]) using MegaTran 2.0 (Cat# [TT210002]).