

Product datasheet for **TP307032M**

CLEC4D (NM_080387) Human Recombinant Protein

Product data:

| | |
|---------------------------------------|---|
| Product Type: | Recombinant Proteins |
| Description: | Recombinant protein of human C-type lectin domain family 4, member D (CLEC4D), 100 µg |
| Species: | Human |
| Expression Host: | HEK293T |
| Expression cDNA Clone or AA Sequence: | >RC207032 protein sequence Red =Cloning site Green =Tags(s) MGLEKPQSKLEGGMHPQLIPSVIAVVFILLLSVCFIASCLVTHHNFSRCKRGTGVHKLEHHAKLKCIKEK SELKSAEGSTWNCCPIDWRAFQSNCFPLTDNKTWAESERNCSGGMGAHLMTISTEAEQNFIIQFLDRRLS YFLGLRDENAKGQWRWVDQTPFNPRRVFVHKNEPDNSQGENCVLVYNQDKWAWNDVPCNFESRICKIP GTTLN TRTRPLEQKLISEEDLAANDILDYKDDDDKV |
| Tag: | C-Myc/DDK |
| Predicted MW: | 24.5 kDa |
| Concentration: | >0.05 µg/µL as determined by microplate BCA method |
| Purity: | > 80% as determined by SDS-PAGE and Coomassie blue staining |
| Buffer: | 25 mM Tris-HCl, 100 mM glycine, pH 7.3, 10% glycerol |
| Preparation: | Recombinant protein was captured through anti-DDK affinity column followed by conventional chromatography steps. |
| Note: | For testing in cell culture applications, please filter before use. Note that you may experience some loss of protein during the filtration process. |
| Storage: | Store at -80°C. |
| Stability: | Stable for 12 months from the date of receipt of the product under proper storage and handling conditions. Avoid repeated freeze-thaw cycles. |
| RefSeq: | NP_525126 |
| Locus ID: | 338339 |
| UniProt ID: | Q8WXI8 |



[View online >](#)

RefSeq Size: 1973

Cytogenetics: 12p13.31

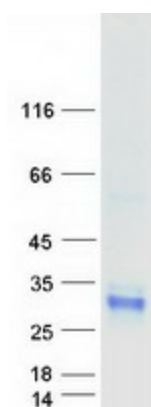
RefSeq ORF: 645

Synonyms: CD368; CLEC-6; CLEC6; CLECSF8; Dectin-3; MCL; MPCL

Summary: This gene encodes a member of the C-type lectin/C-type lectin-like domain (CTL/CTLD) superfamily. Members of this family share a common protein fold and have diverse functions, such as cell adhesion, cell-cell signalling, glycoprotein turnover, and roles in inflammation and immune response. This gene is closely linked to other CTL/CTLD superfamily members on chromosome 12p13 in the natural killer gene complex region. [provided by RefSeq, Jul 2008]

Protein Families: Druggable Genome, Transmembrane

Product images:



Coomassie blue staining of purified CLEC4D protein (Cat# [TP307032]). The protein was produced from HEK293T cells transfected with CLEC4D cDNA clone (Cat# [RC207032]) using MegaTran 2.0 (Cat# [TT210002]).