

Product datasheet for TP307011L

MPP2 (NM_005374) Human Recombinant Protein

Product data:

Product Type:	Recombinant Proteins
Description:	Recombinant protein of human membrane protein, palmitoylated 2 (MAGUK p55 subfamily member 2) (MPP2), 1 mg
Species:	Human
Expression Host:	HEK293T
Expression cDNA Clone or AA Sequence:	>RC207011 protein sequence Red=Cloning site Green=Tags(s)

MPVAATNSETAMQQVLDNLGSLPSATGAAELDLIFLRGIMESPIVRSLAKAHERLEETKLEAVRDNNLEL
VQEILRDLAQLAEQSSTAAELAHILQEPHFQSLLETHDSVASKTYETPPSPGLDPTFSNQPVPPDAVRM
VGIRKTAGEHLGVTFRVEGGELVIARILHGGMVAQQGLLHVGDIIKEVNGQPVGSDPRALQELLRNASGS
VILKILPSYQEPHLPRQVFKCHFDPARDSLIPCKEAGLRFNAGDLLQIVNQDDANWWQACHVEGGSA
GLIPSQLLLEEKRAFKRDLELTPNSGTLGSLSGKKKKRMMYLTTKNAEFDRHELLIYEEVARMPFRR
KTLVLIQAQGVGRRSLKNKLMWDPDRYGTTPYTSRRPKDSEREGQGYSFVSRGEMEADVRAGRYLEHG
EYEGNLYGTRIDSIRGVVAAGKVCVLDVNPQAVKVLRTAEFVYVVFIEAPDFETLRAMNRAALESIST
KQLTEADLRRTVEESSRIQRGYGHYFDLCLVNSNLERTFRELQTAMEKLRTEPQWVPSWVY

TRTRPLEQKLISEEDLAANDILDYKDDDDKV

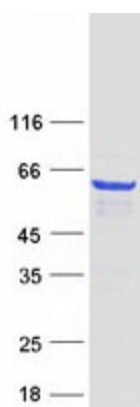
Tag:	C-Myc/DDK
Predicted MW:	61.4 kDa
Concentration:	>0.05 µg/µL as determined by microplate BCA method
Purity:	> 80% as determined by SDS-PAGE and Coomassie blue staining
Buffer:	25 mM Tris-HCl, 100 mM glycine, pH 7.3, 10% glycerol
Preparation:	Recombinant protein was captured through anti-DDK affinity column followed by conventional chromatography steps.
Note:	For testing in cell culture applications, please filter before use. Note that you may experience some loss of protein during the filtration process.
Storage:	Store at -80°C.



[View online »](#)

Stability:	Stable for 12 months from the date of receipt of the product under proper storage and handling conditions. Avoid repeated freeze-thaw cycles.
RefSeq:	NP_005365
Locus ID:	4355
UniProt ID:	Q14168 , D3DX48
RefSeq Size:	4645
Cytogenetics:	17q21.31
RefSeq ORF:	1656
Synonyms:	DLG2
Summary:	Palmitoylated membrane protein 2 is a member of a family of membrane-associated proteins termed MAGUKs (membrane-associated guanylate kinase homologs). MAGUKs interact with the cytoskeleton and regulate cell proliferation, signaling pathways, and intracellular junctions. Palmitoylated membrane protein 2 contains a conserved sequence, called the SH3 (src homology 3) motif, found in several other proteins that associate with the cytoskeleton and are suspected to play important roles in signal transduction. [provided by RefSeq, Jul 2008]
Protein Families:	Druggable Genome

Product images:



Coomassie blue staining of purified MPP2 protein (Cat# [TP307011]). The protein was produced from HEK293T cells transfected with MPP2 cDNA clone (Cat# [RC207011]) using MegaTran 2.0 (Cat# [TT210002]).