

## Product datasheet for TP307007L

### C7orf16 (PPP1R17) (NM\_006658) Human Recombinant Protein

#### Product data:

Product Type:	Recombinant Proteins
Description:	Recombinant protein of human chromosome 7 open reading frame 16 (C7orf16), transcript variant 1, 1 mg
Species:	Human
Expression Host:	HEK293T
Expression cDNA Clone or AA Sequence:	>RC207007 protein sequence <b>Red</b> =Cloning site <b>Green</b> =Tags(s)
	MMSTEQMQPLEVSEDRLDKLDPRCSHLLDLSQFIKDCDLKKKPRKGKNVQATLNVESDQKKPRRKDTPA LHIPPFIGVFSEHLIKRYDVQERHPKGMIPVLHNTDLEQKKPRRKDTPALHMSPFAGVTLLRDERPK AIVEDDEKDGDKIAI
	<b>TRTRPLEQKLISEEDLAANDILDYKDDDDKV</b>
Tag:	C-Myc/DDK
Predicted MW:	17.7 kDa
Concentration:	>0.05 µg/µL as determined by microplate BCA method
Purity:	> 80% as determined by SDS-PAGE and Coomassie blue staining
Buffer:	25 mM Tris-HCl, 100 mM glycine, pH 7.3, 10% glycerol
Preparation:	Recombinant protein was captured through anti-DDK affinity column followed by conventional chromatography steps.
Note:	For testing in cell culture applications, please filter before use. Note that you may experience some loss of protein during the filtration process.
Storage:	Store at -80°C.
Stability:	Stable for 12 months from the date of receipt of the product under proper storage and handling conditions. Avoid repeated freeze-thaw cycles.
RefSeq:	<u><a href="#">NP_006649</a></u>
Locus ID:	10842
UniProt ID:	<u><a href="#">O96001</a></u> , <u><a href="#">A0A090N8N7</a></u>



[View online »](#)

RefSeq Size: 1966

Cytogenetics: 7p14.3

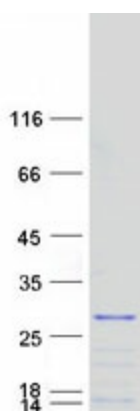
RefSeq ORF: 465

Synonyms: C7orf16; GSBS

**Summary:** The protein encoded by this gene is found primarily in cerebellar Purkinje cells, where it functions as a protein phosphatase inhibitor. The encoded protein is a substrate for cGMP-dependent protein kinase. An allele of this gene was discovered that increases susceptibility to hypercholesterolemia. Two transcript variants encoding different isoforms have been found for this gene. [provided by RefSeq, Jul 2010]

**Protein Pathways:** Long-term depression

### Product images:



Coomassie blue staining of purified PPP1R17 protein (Cat# [TP307007]). The protein was produced from HEK293T cells transfected with PPP1R17 cDNA clone (Cat# [RC207007]) using MegaTran 2.0 (Cat# [TT210002]).