

Product datasheet for **TP307007**

C7orf16 (PPP1R17) (NM_006658) Human Recombinant Protein

Product data:

Product Type:	Recombinant Proteins
Description:	Recombinant protein of human chromosome 7 open reading frame 16 (C7orf16), transcript variant 1, 20 µg
Species:	Human
Expression Host:	HEK293T
Expression cDNA Clone or AA Sequence:	>RC207007 protein sequence Red =Cloning site Green =Tags(s)
	 MMSTEQMQPLEVSEDRLDKLDPRCSHLLDLSQFIKDCDLKKKPRKGKNVQATLNVESDQKKPRRKDTPA LHIPPFIGVFSEHLIKRYDVQERHPKGMIPVLHNTDLEQKKPRRKDTPALHMSPFAGVTLLRDERPK AIVEDDEKDGDKIAI TRTRPLEQKLISEEDLAANDILDYKDDDDKV
Tag:	C-Myc/DDK
Predicted MW:	17.7 kDa
Concentration:	>0.05 µg/µL as determined by microplate BCA method
Purity:	> 80% as determined by SDS-PAGE and Coomassie blue staining
Buffer:	25 mM Tris-HCl, 100 mM glycine, pH 7.3, 10% glycerol
Preparation:	Recombinant protein was captured through anti-DDK affinity column followed by conventional chromatography steps.
Note:	For testing in cell culture applications, please filter before use. Note that you may experience some loss of protein during the filtration process.
Storage:	Store at -80°C.
Stability:	Stable for 12 months from the date of receipt of the product under proper storage and handling conditions. Avoid repeated freeze-thaw cycles.
RefSeq:	NP_006649
Locus ID:	10842
UniProt ID:	O96001 , A0A090N8N7



[View online »](#)

RefSeq Size: 1966

Cytogenetics: 7p14.3

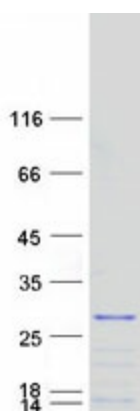
RefSeq ORF: 465

Synonyms: C7orf16; GSBS

Summary: The protein encoded by this gene is found primarily in cerebellar Purkinje cells, where it functions as a protein phosphatase inhibitor. The encoded protein is a substrate for cGMP-dependent protein kinase. An allele of this gene was discovered that increases susceptibility to hypercholesterolemia. Two transcript variants encoding different isoforms have been found for this gene. [provided by RefSeq, Jul 2010]

Protein Pathways: Long-term depression

Product images:



Coomassie blue staining of purified PPP1R17 protein (Cat# TP307007). The protein was produced from HEK293T cells transfected with PPP1R17 cDNA clone (Cat# [RC207007]) using MegaTran 2.0 (Cat# [TT210002]).