

## Product datasheet for TP307003L

### LILRA3 (NM\_006865) Human Recombinant Protein

#### Product data:

|                                       |   |
|---------------------------------------|---|
| Product Type:                         | Recombinant Proteins  |
| Description:                          | Recombinant protein of human leukocyte immunoglobulin-like receptor, subfamily A (without TM domain), member 3 (LILRA3), 1 mg   |
| Species:                              | Human   |
| Expression Host:                      | HEK293T   |
| Expression cDNA Clone or AA Sequence: | >RC207003 protein sequence<br><span style="color: red;">Red</span> =Cloning site <span style="color: green;">Green</span> =Tags(s)<br><br>MTSILTVLICLGLSLDPRTHVQAGPLPKPTLWAEPGSVITQGSPTLRCQGSLETQEYHLYREKKTALWI<br>TRIPQELVKKGQFPILSITWEHAGRYCCYGSHTVGLSESDPLELVVTGAYSKPTLSALPSPVVTSGGN<br>VTIQCDQSQVAFDGFILCKEGEDEHPQCLNSHSHARGSSRAIFSVGPVSPSRRWSYRCYGYDSRAPYVWSL<br>PSDLLGLLVPGVSKKPSLSVQPGPVVAPGEKLTFCGSDAGYDRFVLYKEWGRDFLQRPGRQPQAGLSQA<br>NFTLGPVSRSYGGQYTCSGAYNLSSEWSAPSDPLDILITGQIRARPFLSVRPPTVASGENVTLLCQSQG<br>GMHTFLLTKEGAADSPLRLKSKRQSHKYQAEFPMSPVTSAHAGTYRCYGLSSNPYLLTHPSDPLELVVS<br>GAAETLSPQNKSDSKAGE<br><br><span style="color: red;">TR</span> <span style="color: green;">TRPLEQKLISEEDLAANDILDYKDDDDKV</span> |
| Tag:                                  | C-Myc/DDK   |
| Predicted MW:                         | 47.3 kDa  |
| Concentration:                        | >0.05 µg/µL as determined by microplate BCA method  |
| Purity:                               | > 80% as determined by SDS-PAGE and Coomassie blue staining   |
| Buffer:                               | 25 mM Tris-HCl, 100 mM glycine, pH 7.3, 10% glycerol  |
| Preparation:                          | Recombinant protein was captured through anti-DDK affinity column followed by conventional chromatography steps.  |
| Note:                                 | For testing in cell culture applications, please filter before use. Note that you may experience some loss of protein during the filtration process.  |
| Storage:                              | Store at -80°C.   |
| Stability:                            | Stable for 12 months from the date of receipt of the product under proper storage and handling conditions. Avoid repeated freeze-thaw cycles.   |


[View online »](#)

RefSeq: [NP\\_006856](#)

Locus ID: 11026

UniProt ID: [Q8N6C8](#)

RefSeq Size: 1608

Cytogenetics: 19q13.4

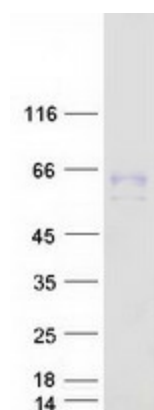
RefSeq ORF: 1317

Synonyms: CD85E; HM31; HM43; ILT-6; ILT6; LIR-4; LIR4

**Summary:** This gene encodes a member of a family of immunoreceptors that are expressed predominantly in monocytes and B cells, and at lower levels in dendritic cells and natural killer cells. The encoded protein lacks the transmembrane region found in other members of this family. It acts as a soluble receptor for class I major histocompatibility complex (MHC) antigens. Alternatively spliced transcript variants encoding different isoforms have been found. This gene is located in a cluster of related genes on chromosome 19 and is polymorphic in human populations, with many individuals containing a deletion of this genomic region. [provided by RefSeq, Mar 2014]

**Protein Families:** Secreted Protein

## Product images:



Coomassie blue staining of purified LILRA3 protein (Cat# [TP307003]). The protein was produced from HEK293T cells transfected with LILRA3 cDNA clone (Cat# [RC207003]) using MegaTran 2.0 (Cat# [TT210002]).