

Product datasheet for TP307003

LILRA3 (NM_006865) Human Recombinant Protein

Product data:

Product Type:	Recombinant Proteins
Description:	Recombinant protein of human leukocyte immunoglobulin-like receptor, subfamily A (without TM domain), member 3 (LILRA3), 20 µg
Species:	Human
Expression Host:	HEK293T
Expression cDNA Clone or AA Sequence:	>RC207003 protein sequence Red=Cloning site Green=Tags(s)

MTSILTVLICLGLSLDPRTHVQAGPLPKPTLWAEPGSVITQGSPVTLRCQGSLETQEYHLYREKKTALWI
TRIPQELVKKGQFPILSITWEHAGRYCCIIYGSHTVGLSESSDPLELVWTGAYSKPTLSALPSPVWTSGGN
VTIQCDSQVAFDGFILCKEGEDHPQCLNSHSHARGSSRAIFSVGPVSPSRRWSYRCYGYDSRAPYVWSL
PSDLLGLLVPGVSKKPSLSVQPGPVVAPGEKLTFCGSDAGYDRFVLYKEWGRDFLQRPGRQPQAGLSQA
NFTLGPVRSYGGQYTCSGAYNLSSEWSAPSDPLDILITGQIRARPFLSVRP GPTVASGENVTLLCQSQG
GMHTFLLTKEGAADSPLRLKSKRQSHKYQAEFPMSPVSAHAGTYRCYGLSSNPYLLTHPSDPLELVVS
GAAETLSPQNKSDSKAGE

TRTRPLEQKLISEEDLAANDILDYKDDDDKV

Tag:	C-Myc/DDK
Predicted MW:	47.3 kDa
Concentration:	>0.05 µg/µL as determined by microplate BCA method
Purity:	> 80% as determined by SDS-PAGE and Coomassie blue staining
Buffer:	25 mM Tris-HCl, 100 mM glycine, pH 7.3, 10% glycerol
Preparation:	Recombinant protein was captured through anti-DDK affinity column followed by conventional chromatography steps.
Note:	For testing in cell culture applications, please filter before use. Note that you may experience some loss of protein during the filtration process.
Storage:	Store at -80°C.
Stability:	Stable for 12 months from the date of receipt of the product under proper storage and handling conditions. Avoid repeated freeze-thaw cycles.



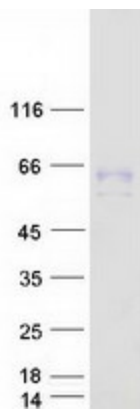
[View online »](#)

RefSeq:	NP_006856
Locus ID:	11026
UniProt ID:	Q8N6C8
RefSeq Size:	1608
Cytogenetics:	19q13.4
RefSeq ORF:	1317
Synonyms:	CD85E; HM31; HM43; ILT-6; ILT6; LIR-4; LIR4

Summary: This gene encodes a member of a family of immunoreceptors that are expressed predominantly in monocytes and B cells, and at lower levels in dendritic cells and natural killer cells. The encoded protein lacks the transmembrane region found in other members of this family. It acts as a soluble receptor for class I major histocompatibility complex (MHC) antigens. Alternatively spliced transcript variants encoding different isoforms have been found. This gene is located in a cluster of related genes on chromosome 19 and is polymorphic in human populations, with many individuals containing a deletion of this genomic region. [provided by RefSeq, Mar 2014]

Protein Families: Secreted Protein

Product images:



Coomassie blue staining of purified LILRA3 protein (Cat# TP307003). The protein was produced from HEK293T cells transfected with LILRA3 cDNA clone (Cat# [RC207003]) using MegaTran 2.0 (Cat# [TT210002]).